
Trash Work Group Meeting
December 6, 2011 – 10:00 to 11:40 am

Note Different Location! → Twin Pines Lodge

40 Twin Pines Lane – Belmont

AGENDA

- | | | | |
|----|---------------------------------------------------------------------------------------------------------------------------------------------------------------------------------------------------------------------------------------------------------------------------------------------------------------------------------------------------|---------|-------------------------------------|
| 1. | Introductions, Announcements, Approve September Meeting Summary and Agree on Agenda
<i>Outcome: Agree on agenda and meeting summary and hear any announcements.</i> | 10 min. | <i>Matt Fabry</i> |
| 2. | Selection of New Chair
<i>Outcome: Agree on new work group chair.</i> | 5 min. | <i>Matt/Everyone</i> |
| 3. | Explore Interest in Having Countywide Program Coordinate A Spring Trash Cleanup
<i>Outcome: Agree on how to proceed.</i> | 15 min. | <i>Tim Swillinger/
Everyone</i> |
| 4. | Update on BASMAA's Trash Load Reduction Tracking Method Development and Stormwater Baseline Trash Generation Rate Study
<i>OUTCOME: Obtain update on development of trash load reduction tracking method and trash generation rates study.</i> | 30 min. | <i>Chris Sommers/
Everyone</i> |
| 5. | Update on Short-Term Trash Load Reduction Plan Development
<i>OUTCOME Discuss Short-Term Plan Development and associated tasks. Discuss process moving forward and schedule for completion.</i> | 15 min. | <i>Chris/
Everyone</i> |
| 6. | Report Progress on Agencies' Installing Trash Full-Capture Devices As Part of ABAG's Demonstration Project and Status of Additional Funds for Disadvantaged Community Areas
<i>OUTCOME: Review each agency's progress and obtain update on prospects for receiving disadvantaged community block area funds from State Water Board.</i> | 15 min. | <i>Matt/Everyone</i> |
| 7. | Agree on Next Meeting Date of January 25?
<i>OUTCOME: Agree on next meeting date and topics.</i> | 10 min. | <i>Everyone</i> |

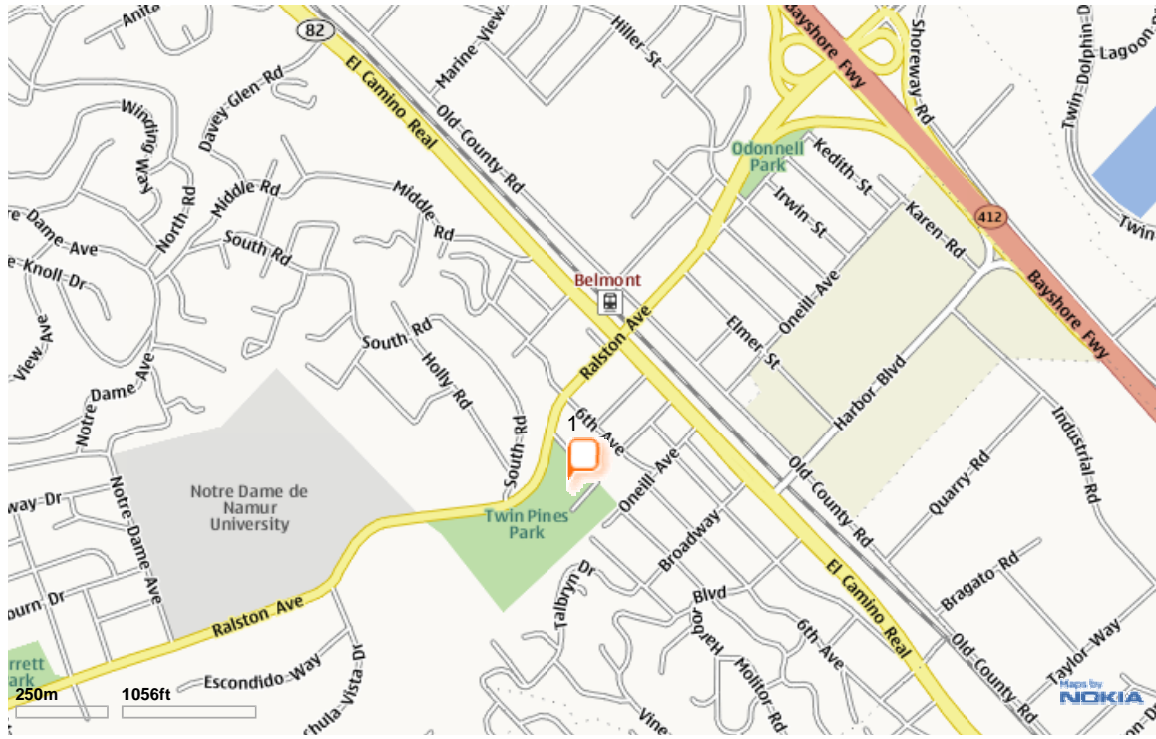
Print



powered by Nokia

40 Twin Pines Ln, Belmont, CA 94002-3889

Twin Pines Lodge



Draft Trash Work Group Meeting Summary– Belmont Sports Complex

Meeting Date: September 29, 2011

Subcommittee Action:

1. Agreed that the June meeting summary was acceptable.
2. Countywide Program staff will provide San Mateo County Mosquito and Vector Control District staff contact information for West Coast Storm so that it may discuss the fabrication of holes in the automatic retractable screens in order to allow the more efficient application of oils.

Requested Technical Advisory Committee Action or Feedback/Guidance (if any): None.

Other Information/Announcements:

- **San Mateo County Mosquito and Vector Control District.** James Counts reported that they pick up trash in a few creeks, and cities could contract for this service at about \$50/hour. Cities that are using automatic retractable screens should have 1.5 – 2 inch diameter holes installed so that oils may be added to the catch basins without the operator leaving the truck to apply 25 lbs. of pressure needed to open the automatic retractable screens. A big issue in San Mateo County that does not exist in Los Angeles is the amount of subsidence that hinders the flow of oil down storm drain lines to standing water. Chris Sommers pointed out that adding holes to the automatic retractable screens would not affect full capture because the connector pipe screens provide full capture not the automatic retractable screens.
- **BASMAA’s Proposed Trash Load Reduction Tracking Methods.** Chris provided an update on BASMAA’s trash loading and loads reduction project. The municipal regional stormwater permit (MRP) requires each municipality to determine its baseline trash load and to reduce this loading by 40% by July 1, 2014. A description of the methods that will be used to develop the baseline trash loading and the methods for reducing this loading are due to the Water Board on February 1, 2012, which is the same date each municipality is required to submit its Short-Term Trash Load Reduction Plan to the Water Board.
 - As part of a literature review, BASMAA identified five studies that document the amounts of trash loading from different land uses. The amount of trash loading varies with the type of land use. About 60 to 70% of trash loading occurs with the first storm each year.
 - BASMAA decided a local study of trash loading was needed because of the high variability found among previous studies. BASMAA’s study is looking at approximately 150 sites, with 40% of the sites associated with retail land uses even though this category only comprises about 3% of the urban area. About 20 sites are located in San Mateo County, 20 sites in Contra Costa County, 50 sites in Alameda County, and the remainder in Santa Clara County.
 - In calculating each municipality’s trash loading certain land uses will be excluded, such as land owned by Caltrans, and forested, non-urbanized areas.

Process for Helping Cities Develop Their Short-Term Trash Load Reduction Plans. EOA needs street sweeping information from each city. EOA staff plans to sit down with each city at a central location, if possible, to help each city to decide what trash load reduction measures will be used to achieve a 40% reduction in trash loading. The Water Board staff expects that each municipality will need to show how it enhanced its trash control efforts to comply with the trash load reduction requirements. A Short-Term Trash Load Reduction Plan template is being developed to standardize the creation of trash load reduction plans and their reporting. Cities will

have an opportunity to augment, as needed, ABAG's 2005 land use map. The February 1

Short-Term Trash Load Reduction Plan should state that the plan may be amended with the annual report.

- **Status of Agencies' Installing Trash Full-Capture Devices.** The progress of various agencies in installing the full-trash capture devices under ABAG's demonstration project grant was discussed. Brisbane has installed 14 West Coast Storm (WCS) connector pipe screens (CPS); Belmont has installed 28 WCS CPS and more will be installed in a few weeks; Half Moon Bay has installed 9 automatic retractable screens and 31 CPS; San Mateo County has installed 28 WCS CPSs; and East Palo Alto will be installing 38 CPS. Following the meeting City of San Mateo staff reported that they will be installing 143 WCS CPS, and South San Francisco staff plans to order about 100 WCS CPS.

Subcommittee Work That Affects Other Subcommittees: Solving trash problems involves multiple subcommittees.

Next Steps: Schedule and initiate meetings with each municipality to develop their Short-Term Trash Load Reduction Plans.

Next Meeting Date: The next meeting will be held at the Belmont Sports Complex on December 6, which is one day earlier than originally discussed in order to avoid a room scheduling conflict. A new work group chair will need to be found because Kiley Kinon has accepted a new position.

Trash Work Group Meeting Attendance – FY 2011/12

Name	Agency	PHONE	E-Mail	Sep 29	Dec 6	Jan 25	April 25
Steve Tyler	City of Atherton		styler@ci.atherton.ca.us				
Randy Fernando	City of Belmont		rferrando@belmont.gov	√			
Tim Murray	City of Belmont	(650) 222-6460	tmurray@belmont.gov	√			
Rosemary Field	City of Belmont		rfield@belmont.gov				
Leticia Alvarez	City of Belmont		lalvarez@belmont.gov				
Alberto d'Jovza	City of Belmont						
Matt Fabry	SMCWPPP Program Coordinator	(650) 599-1419	mfabry@co.sanmateo.ca.us				
Dale Allen	City of Brisbane	(415) 508-2130	dallen@ci.brisbane.ca.us	√			
Vincent Falzon	City of Burlingame	(650) 558-7679	vfalzon@burlingame.org				
Peter Gaines	City of Burlingame	(650) 558-7672	pgaines@burlingame.org				
John Baack	City of Burlingame		JBaack@burlingame.org				
Kiley Kinnon	City of Burlingame	(650) 342-3727	kiley.kinnon@veoliawaterma.com	√			
Louis Gotelli	City of Colma	(650) 333-0295	louis.gotelli@colma.ca.gov				
Phil Scramaglia	City of Colma		phil@csgengr.com				
Jesse Myott	City of Daly City	(650) 991-8054	jmyott@dalcycity.org	√			
John Fuller	City of Daly City	(650) 991-8039	jfuller@dalcycity.org	√			
Michelle Daher	City of East Palo Alto	(650) 853-3197	mdaher@cityofepa.org	√			
Jay Farr	City of East Palo Alto	(650) 853-3105	jfarr@cityofepa.org				
Norm Dorais	City of Foster City	(650) 286-3279	ndorais@fostercity.org				
Larry Carnahan	City of Half Moon Bay	(650) 636-3753	larryc@hmbcity.com	√			
Mo Sharma	City of Half Moon Bay	(650) 726-7177	mosharma@hmbcity.com				
Gary Francis	Town of Hillsborough		gfrancis@hillsborough.net				
Dave Bishop	Town of Hillsborough		dbishop@hillsborough.net				
Rebecca Fotu	City of Menlo Park		rfotu@menlopark.org	√			
Joe Pimentel	City of Menlo Park		jppimentel@menlopark.org				
Craig Centis	City of Millbrae	(650) 259-2369	ccentis@ci.millbrae.ca.us	√			
Mike Riddell	City of Millbrae		mriddell@ci.millbrae.ca.us				
Raymund Donguines	City of Pacifica	738-3767	donguinesr@ci.pacifica.ca.us				
Elizabeth Claycomb	City of Pacifica		Claycombe@ci.pacifica.ca.us				
James McNally	City of Pacifica		mcnallyj@ci.pacifica.ca.us				
Eric Steele	City of Pacifica	(650) 738-3775	Steelee@ci.pacifica.ca.us				
Dustin Cohn	City of Pacifica		dustincohn@hotmail.com				
Howard Young	Town of Portola Valley		hyoung@portolavalley.net				
Leslie Lambert	Town of Portola Valley		llambert@portolavalley.net				
Ray Bartolo	City of Redwood City		rbartolo@redwoodcity.org				
Marilyn Harang	City of Redwood City	(650) 780-7477	MHarang@redwoodcity.org				
Gino Quinn	City of San Bruno	(650) 616-7160	gquinn@sanbruno.ca.gov				
Robert Howard	City of San Bruno	(650) 616-7160	rhoward@sanbruno.ca.gov				
Paul Baker	City of San Carlos	(650) 802-4140	pbaker@cityofsancarlos.org				
Ray Chan	City of San Carlos		rchan@cityofsancarlos.org				
Shelli St. Clair	City of San Mateo	(650) 522-7342	sstclair@cityofsanmateo.org	√			

Name	Agency	PHONE	E-Mail	Sep 29	Dec 6	Jan 25	April 25
Rob Lecel	City of So. San Francisco	(650) 829-3882	rob.lecel@ssf.net				
Cassie Prudhel	City of So. San Francisco	(650) 829-3840	cassie.prudhel@ssf.net				
Shoshana Wolff	City of So. San Francisco	(650) 829-3880	shoshana.wolff@ssf.net	√			
Gratien Etchebehere	Town of Woodside	(650) 851-6790	getchebehere@woodsideside.org	√			
Kim Eunejune	Town of Woodside		ekim@woodsideside.org				
Stephen Fischer	County of San Mateo - DPW	(650) 599-7281	SFischer@co.sanmateo.ca.us				
Julie Casagrande	County of San Mateo - DPW	(650) 599-1457	jasagrande@co.sanmateo.ca.us	√			
Diana Shu	County of San Mateo		dshu@co.sanmateo.ca.us				
Tim Swillinger	County of San Mateo-Environmental Health	(650) 372-6245	tswillinger@co.sanmateo.ca.us				
James Counts	San Mateo Co. Mosquito and Vector Control District	(650) 642-4846	James@smcmad.org	√			
Chindi Peavey	San Mateo Co. Mosquito and Vector Control District	(650) 344-8592	cpeavey@smcmad.org	√			
John Michels	Caltrans	(510) 622-5996	john_michels@dot.ca.gov				
Chris Sommers	EOA, Inc.	(510) 832-2852 X 109	csommers@eoainc.com	√			
Fred Jarvis	EOA, Inc.	(510) 832-2852 X 111	fejarvis@eoainc.com	√			
No. Attending				18			