

Statewide General Construction Permit & Municipal Regional Permit


Kristin Kerr
EOA, Inc.

Construction Inspection Workshop
April 22, 2014



Outline



- Review of Storm Water Regulations
- Statewide General Construction Permit Information and Requirements
- Applicability to Municipal MRP Activities
- Applicability to Municipal Construction Projects



Stormwater Regulations 101

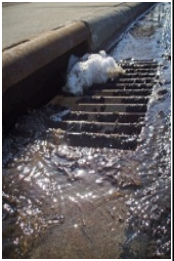

The Clean Water Act

- Requires a Permit to discharge into Waters of the State from Point Sources
 - Wastewater Treatment Plants
 - Industrial Facilities
- NPDES (National Pollutant Discharge Elimination System) Permits



1986 Amendments: Stormwater Nonpoint Source

- Requires **permits to discharge stormwater** from:
 - Municipal Separate Storm Drains (MS4)
 - Industrial Facilities
 - Construction Sites
- Larger municipalities' permits called Phase 1 and smaller ones Phase 2
- NPDES Stormwater Permits

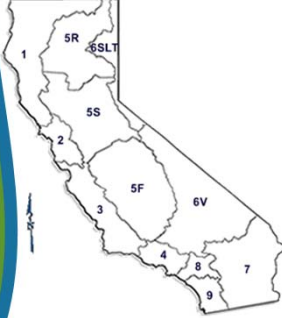



Why Regulate Pollutants in Stormwater?

- A storm drain system is **completely separate** from the sanitary sewer system
- Water entering storm drains generally **receives no treatment** before discharging to creeks and the Bay

Municipal NPDES Permitting Authority



U.S. EPA

↓


State Water Resource Control Board

↓

Regional Water Quality Control Board
9 regions

↓

Municipal Separate Storm Sewer System (MS4)



Stormwater Permits

- Individual NPDES Stormwater Permits – issued by Regional Board
 - Municipal Regional Permit (MRP)
- Statewide NPDES General Stormwater Permits – issued by State Board
 - Industrial General Permit (IGP)
 - Construction General Permit (CGP)
 - Phase II MS4 General Permit



Statewide General Permits

- NPDES authority issues one permit
- Used to cover same or similar operations
- Facilities/municipality applies for coverage
- Facilities/municipality submits Intent (NOI)



Statewide Construction SW General Permit (CGP)

- Revised Permit adopted by State Board September 2009
- Became effective July 1, 2010
- Reissuance planned for 2015 with minor clarification revisions



Statewide Construction SW General Permit (CGP)

- Applies to projects that disturb ≥ 1 acre of land in California
 - Public Projects (e.g. Capital Improvement Projects)
 - Private Projects



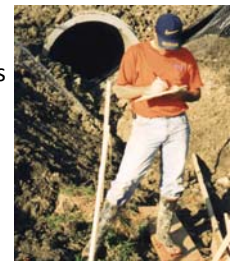
Statewide Construction SW General Permit (CGP)

- Contains requirements for minimum site BMPs, inspections, sampling, SWPPP, reporting (SMARTs), QSP/QSD certification
- Requirements based on Risk Level (1, 2, 3)
- Post-construction runoff reduction requirements do NOT apply to sites in MRP area



Statewide Construction SW General Permit (CGP)

- Regional Water Board staff responsible for compliance inspections & enforcement of CGP



What do you need to know about the CGP?

- Obtain coverage under the CGP for any public projects that disturb ≥ 1 acre
- Implement CGP requirements for applicable capital projects, including
 - Have a Qualified SWPPP Developer develop a Stormwater Pollution Prevention Plan (SWPPP)
 - Have a Qualified SWPPP Practitioner implement the SWPPP
- Will you be involved in CGP required inspections or sampling?



Why do you need to know about the CGP?

- MRP requirement to verify owners of private construction sites that disturb ≥ 1 acre have filed NOI for coverage by CGP
- MRP requirement to inspect construction sites that disturb ≥ 1 acre monthly during wet season for compliance with local ordinances
 - SWPPP, QSP, inspection records, sampling results, etc. may help inform your MRP inspection



Public/CIP Project Inspections

- Important to know why you are inspecting the site
 - MRP required monthly inspection
 - CGP required weekly, post-storm, pre-storm inspections
 - Verify CGP requirements are implemented by contractor for city/agency



Why do you need to know about the CGP?

- Overall site compliance reflects on your inspection program
 - You inspect construction sites for compliance with local SW ordinance
 - Regional Water Board staff inspects construction sites for compliance with CGP
 - Regional Water Board staff enforce compliance with MRP Construction Site Inspection Program



Questions ?

