

Integrated Green Infrastructure Planning, Funding and Implementation

SMCWPPP
Annual C3 Workshop
June 11, 2014
Peter Schultze-Allen, EOA

Presentation Overview

- Commonalities of Emeryville & San Mateo
- Green Infrastructure (GI) Defined
- Examples of GI Projects Around the Bay
- Integrating GI with the Other Pollutants
- GI and the Next MRP
- What Your Jurisdiction Can Do
- Funding

Commonalities between San Mateo and Emeryville

- In both Cities, Complete Streets Policies and Pedestrian Plans were key elements of process.
- Had a champion at the Management Level or higher and a leader at the line staff level.
- Redevelopment and Greening of the City was key.
- Grant funding for Water Quality was combined with Transportation funding.
- O&M Funding was a challenge.
- The Community was engaged and educated.
- Institutionalizing GI into planning efforts takes time.

Green Infrastructure Defined and Benefits

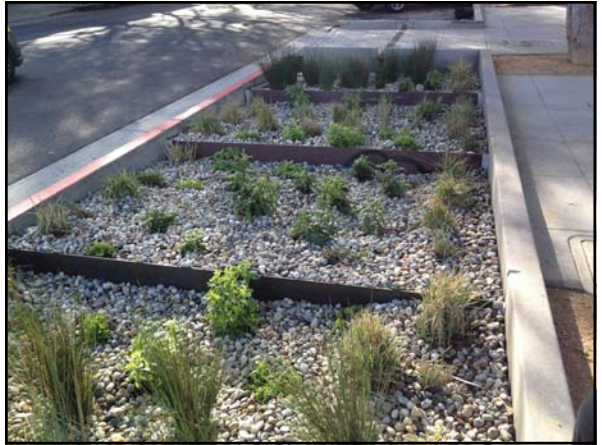
- Public and Private Property
- Using the Environmental Services of Plants and Trees
- Creating Resilience, Habitat, Moderating Temperatures
- Improving Walkability, Transit and Bicycling Network
- Replacing Impervious Surfaces
- Improving Water Quality
- Creating Unique/Attractive Streetscapes and Neighborhoods

Pedestrian Safety Curb Extensions

Don't just reduce crossing distance:

- Better visibility (both ways)
- Traffic calming
- More room for street furniture and street trees
- Adds landscaping

Stormwater Curb Extensions








Integrating Other Pollutants

- Trash - C.10
- PCBs - C.11
- Mercury - C.12











- Adding those to C3 and typical vehicle pollutants such as hydrocarbons, copper etc.



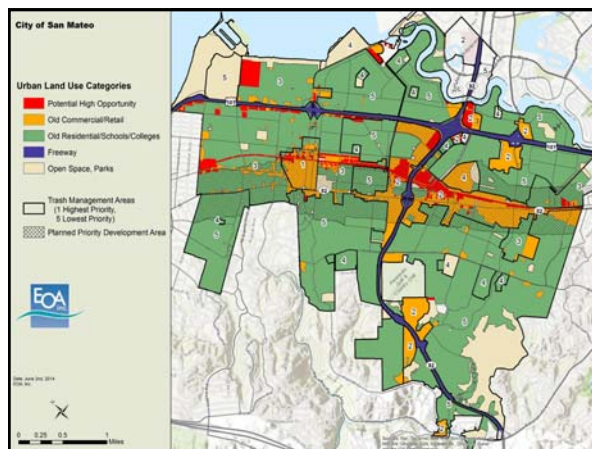
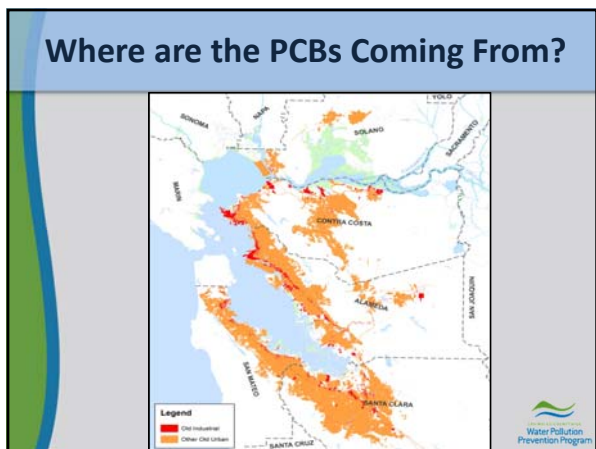
PCBs/Mercury Problem Statement

Driver: Fish Consumption Advisories and TMDL Load Allocations

A guide to eating San Francisco Bay fish and shellfish
Women 18 - 45 and children 1 - 17

Safe to eat 2 servings per week	OR	Safe to eat 1 serving per week	Do not eat
 Chinook (king) salmon		 California halibut	 Striped Bass
 Brown rockfish		 White croaker	 Surperches
 Red rock crab		 Jacksmelt	 Sharks
			 White sturgeon


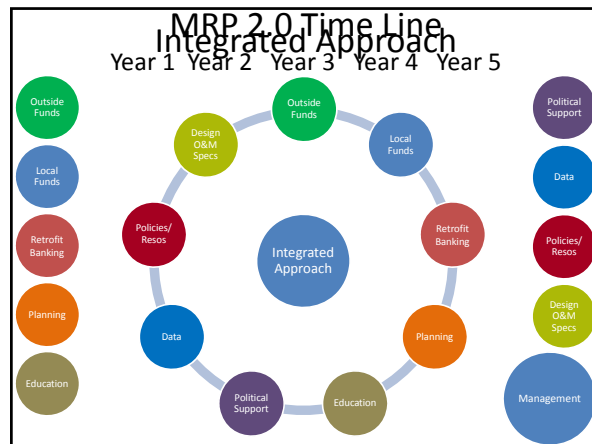
♥ = High in Omega-3s



GI and the Next MRP

Two Paths Proposed by WB Staff:

1. Implement an Integrated GI Plan
- OR
2. Treat runoff from ALL Road Projects

Possible MRP Regional Tasks

- Development of a Preliminary Scoping Plan
- Model Municipal GI Resolution
- Funding Study including O&M
- Regional Roundtable Coordination
- Regional GI Technical Training Outreach
- GIS Prioritization Tool
- Model Long Term GI Plan
- Design, Construction and O&M Specs.



What Your Jurisdiction Can Do

- What's important to your community?
- What do Elected's care about?

Focus Areas:

- Active Transportation (Bike/Ped)
- Urban Forestry & Open Space
- New Development
- Water Quality



Possible MRP Municipal Tasks

- Assemble a Green Infrastructure Team
 - Get Buy-in from Management
 - Hold a Study Session for Electeds
- Add GS/GI to Planning efforts underway
- Education/Public Outreach - San Mateo's Taste and Talk Series is a good example.
- Update Urban Forestry Standards
- Adopt GI Resolution
- Integrate C.3 with C.10, C.11 and C.12 (Pollutants of Concern: Trash, Mercury and PCBs)



Options for Municipal Approach to GI Planning

- General Plan
- Pedestrian and/or Bicycle Plan
- Capital Improvement Program
- Annual Pavement Work Plan
- Storm/Sewer Master Plan
- Specific/Precise or Neighborhood Plan
- Green Street/Infrastructure Design Guidelines
- Green Street/Infrastructure Ordinance



Funding

- Who will pay in the short and long term for capital improvements?
- Private (regulations or development) or
- Public (grants or taxes/fees)
- Partnerships?



One-Time Construction Sources

- Prop 84
- Caltrans & Federal Transportation Grants
- EPA Grants
- Local Bond Measures (Berkeley Meas. M)
- Mitigation Funds (Caltrans, Oil Spills etc.)
- Developer Contributions
- Street Beautification Grants/Donations
- Alternative Compliance/Banking



On-Going O&M Fund Sources

- Transportation Funding (State Trnsp. Imprv. Prg)
- Stormwater Fees
- Vehicle License Fees/Vehicle Reg. Fees
- Gas Taxes
- Sales Tax Measures (Ex: Meas. B in Ala. Cnty.)
- Alternative Compliance/Banking
- Property Tax Measures (Landscape/Lighting AD)
- User Fees (Parking Meters and Park Fees)
- Business Improvement Districts
- Public Private Partnerships (EPA Model "P3")



Contact Information:

Peter Schultze-Allen
 LEED AP & BFQP
 Senior Scientist
 EOA Inc.
 510-832-2852 x128
pschultze-allen@eoainc.com

