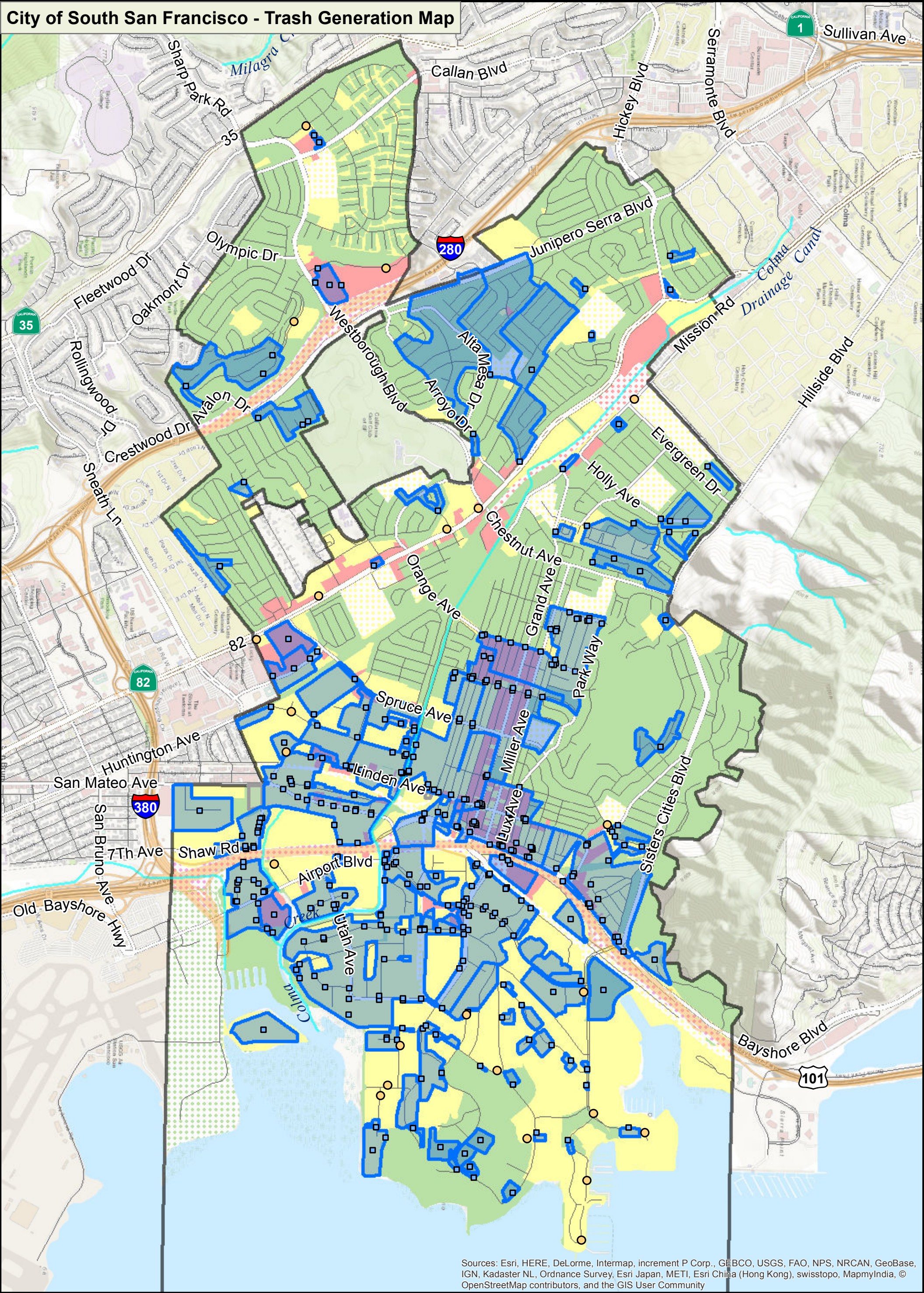


# City of South San Francisco - Trash Generation Map



Sources: Esri, HERE, DeLorme, Intermap, increment P Corp., GEBCO, USGS, FAO, NPS, NRCAN, GeoBase, IGN, Kadaster NL, Ordnance Survey, Esri Japan, METI, Esri China (Hong Kong), swisstopo, MapmyIndia, © OpenStreetMap contributors, and the GIS User Community

<b>Trash Generation Category</b>		○ On-Land Visual Assessment Site	~ Street
Low	○ Creek/Shoreline Hotspot	■ Full-Capture Location	Freeway
Moderate	■ Non-Jurisdictional (Dot color = Generation Category)	■ Full Trash Capture	Agency Boundary
High			Creek
Very High			

0 0.225 0.45 0.9 Miles