

SMCWPPP CII Stormwater Inspector Training - Case Studies Group Exercise

May 17, 2021

Case Study #1 – Process Area

Coolant discharge from generator ends up on non-permeable ground; doesn't fully evaporate; not actively discharging but evidence (wet ground) and contact verifies that is what happens

- *Potential or actual discharge?*
- *Enforcement/corrective actions?*



Case Study #1 – Process Area

Coolant discharge hose
now placed into plastic,
5-gallon bucket

- *Are corrective actions
sufficient?*



Case Study #2 – Waste Storage



Trash bins approaching overflow with lids open

- *Enforcement/corrective actions needed?*

Case Study #2 – Waste Storage



- *Are corrective actions sufficient?*
- *If lids were closed during the inspection, would you just note issue on inspection form or issue enforcement action?*

Case Study #3 – Material Storage



Used car/tire parts raised
but not covered

Cardboard for recycling
not fully contained

- *Enforcement/
corrective actions
needed?*

Case Study #3 – Material Storage



Used car/tire parts raised
and covered

Cardboard removed

- *Are corrective actions sufficient?*

Case Study #4 – Waste Storage

Used oil/grease spillage and build-up on and around tallow bin

- *Enforcement/
corrective actions
needed?*



Case Study #4 – Waste Storage

Used oil/grease has been cleaned from sides of bin and surrounding area

Bin has been placed in secondary containment

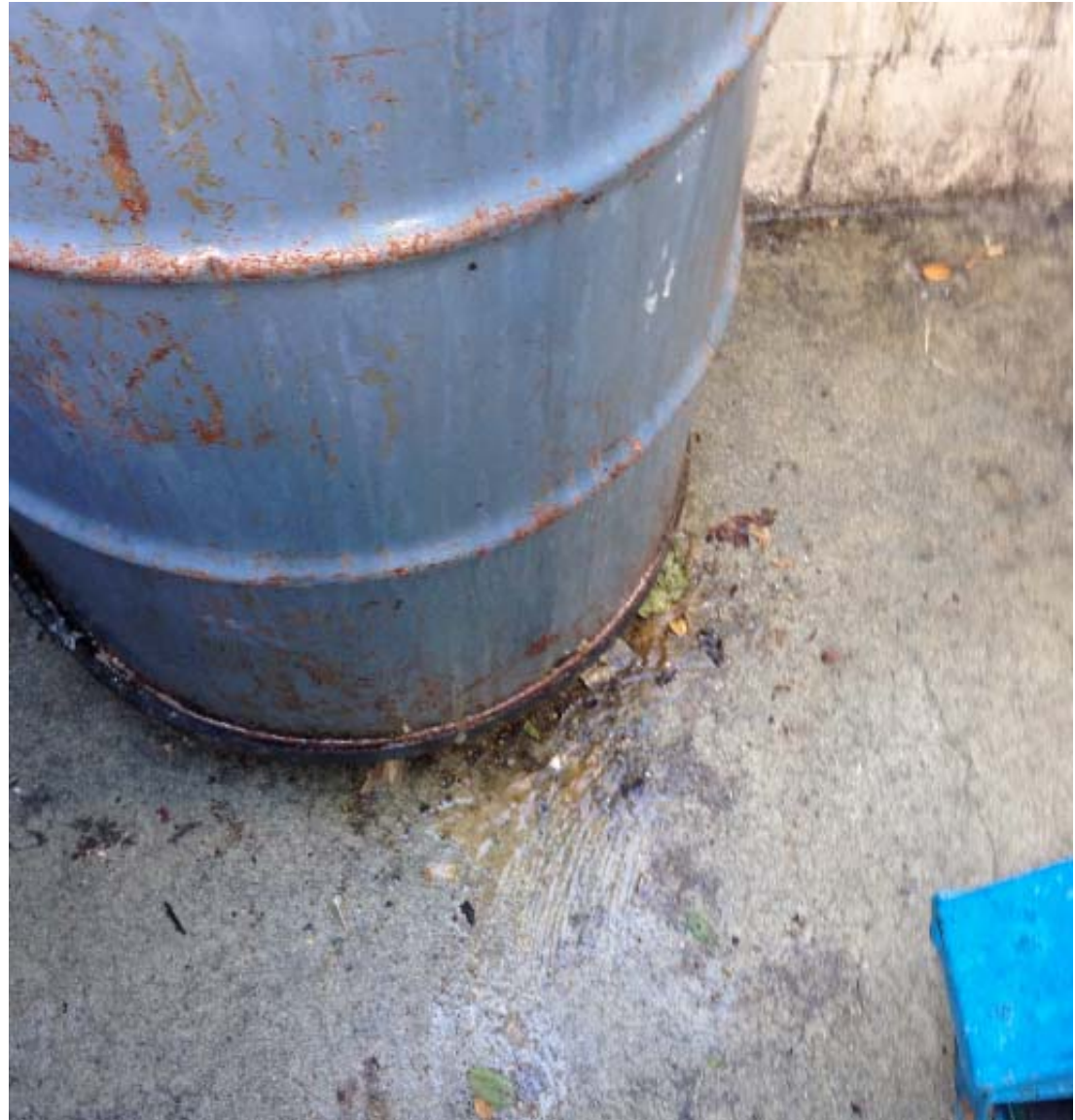
- *Are corrective actions sufficient?*
- *Appropriate method of secondary containment?*
- *Is secondary containment **always** needed?*



Case Study #5 – Waste Storage

Used oil/grease spillage and build-up on ground below tallow bin

- *Enforcement/ corrective actions needed?*



Case Study #5 – Waste Storage



Used oil/grease has been cleaned from ground below drum

- *Are corrective actions sufficient?*

Case Study #6 – Material Storage

Large number of used car parts and associated material stored uncovered

- *Enforcement/ corrective actions needed?*



Case Study #6 – Material Storage



All items now securely covered with tarps

- *Are corrective actions sufficient?*

Case Study #7 - Illicit Discharge



Process water from concrete cutting operation discharging to street

Water appears to be murky with some vehicle track-out



- *Enforcement/ corrective actions needed?*

Case Study #7 - Illicit Discharge

Water
discharge has
been stopped

Most of the
sediment track
out has been
removed



- *Are corrective actions sufficient?*

Case Study #8 – Waste Storage

Tallow bins in waste storage enclosure have build-up of oil and grease on top, sides, and ground below

Storm drain in close proximity to problem area



- *Enforcement/corrective actions needed?*

Case Study #8 – Waste Storage

Tallow bins
have been
replaced and
fitted with
secondary
containment;
oil removed
from ground

Entire area has
been bermed



- *Are corrective actions sufficient?*

Case Study #9 – Waste Storage

Used oil filters
stored outside,
without secondary
containment, for
recycling

Manager
stated very little
oil present on filters;
no mention in
hazmat plan



- *Enforcement/corrective actions needed?*

Case Study #9 – Waste Storage

Spill Pallets
purchased and
drums placed on
top

Tarps to cover
drums when not in
use

- *Are corrective
actions sufficient?*

