

City of Burlingame California Drive Roundabout Project



Presentation Overview



Existing Conditions/
Problems



Project Goals



Design Concept



Public Outreach



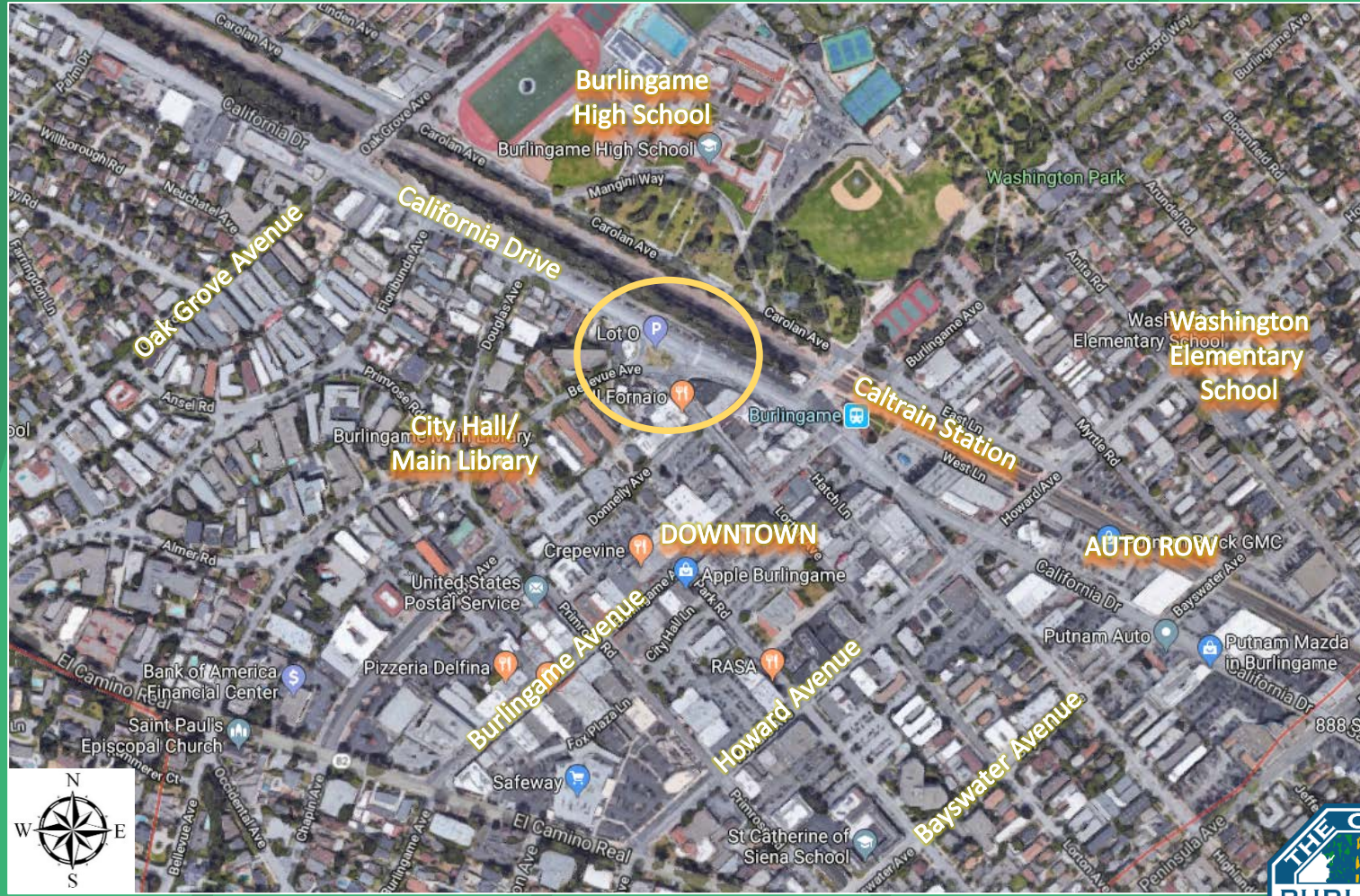
Construction Staging



Challenges/
Lessons Learned

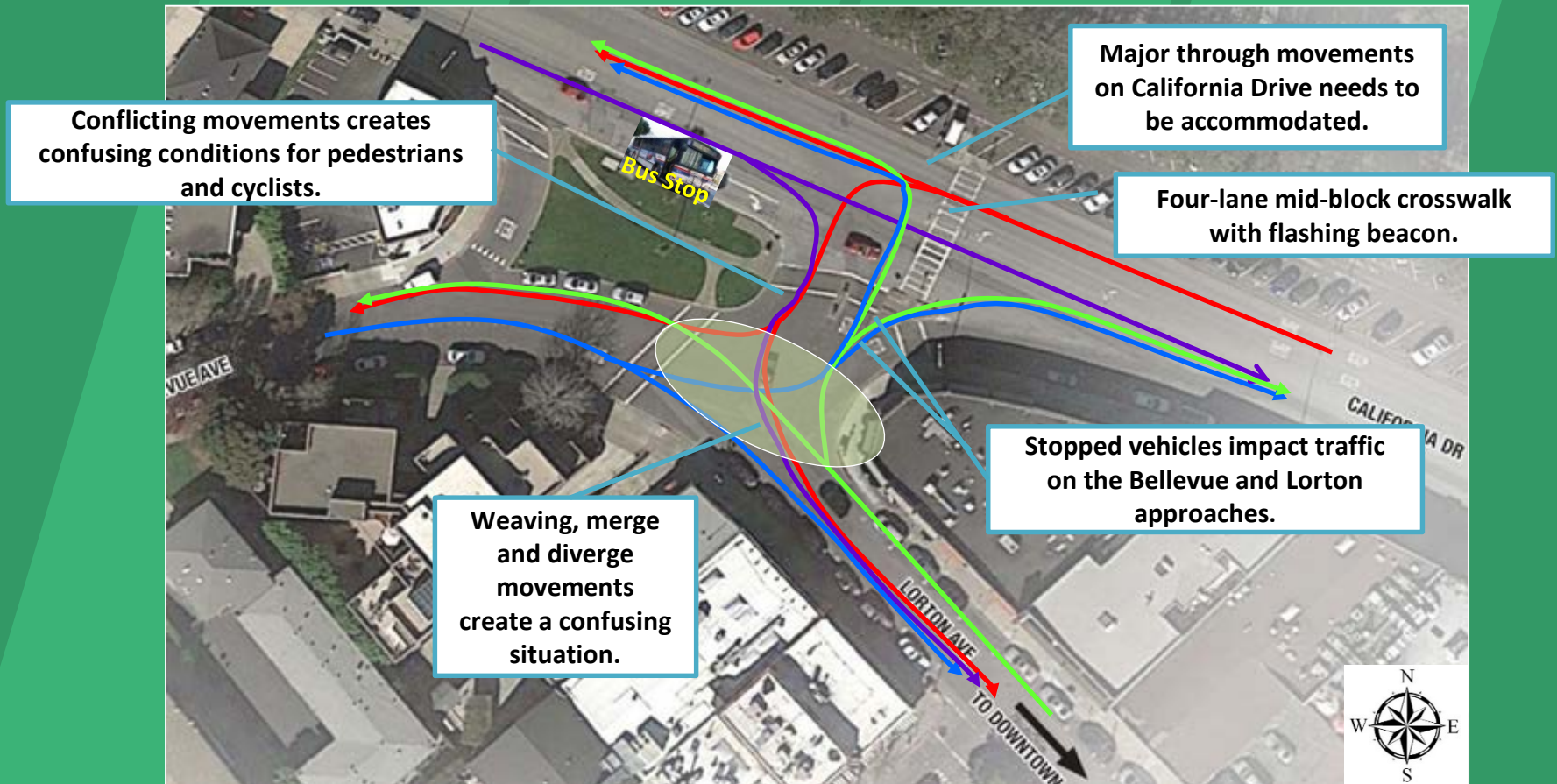


Project Location



Existing Conditions & Problems

- 19 different vehicular turning movements
- 5 crosswalks in conflicting positions



Project Goals

- Improve the California Drive, Bellevue Avenue and Lorton Avenue intersection by:
 - Improving safety and flow of all modes of transportation (pedestrians, bicyclists, and vehicles);
 - Incorporating Green Streets and Complete Streets components;
 - Enhancing bicycle and pedestrian access; and
 - Minimizing construction and parking impacts.

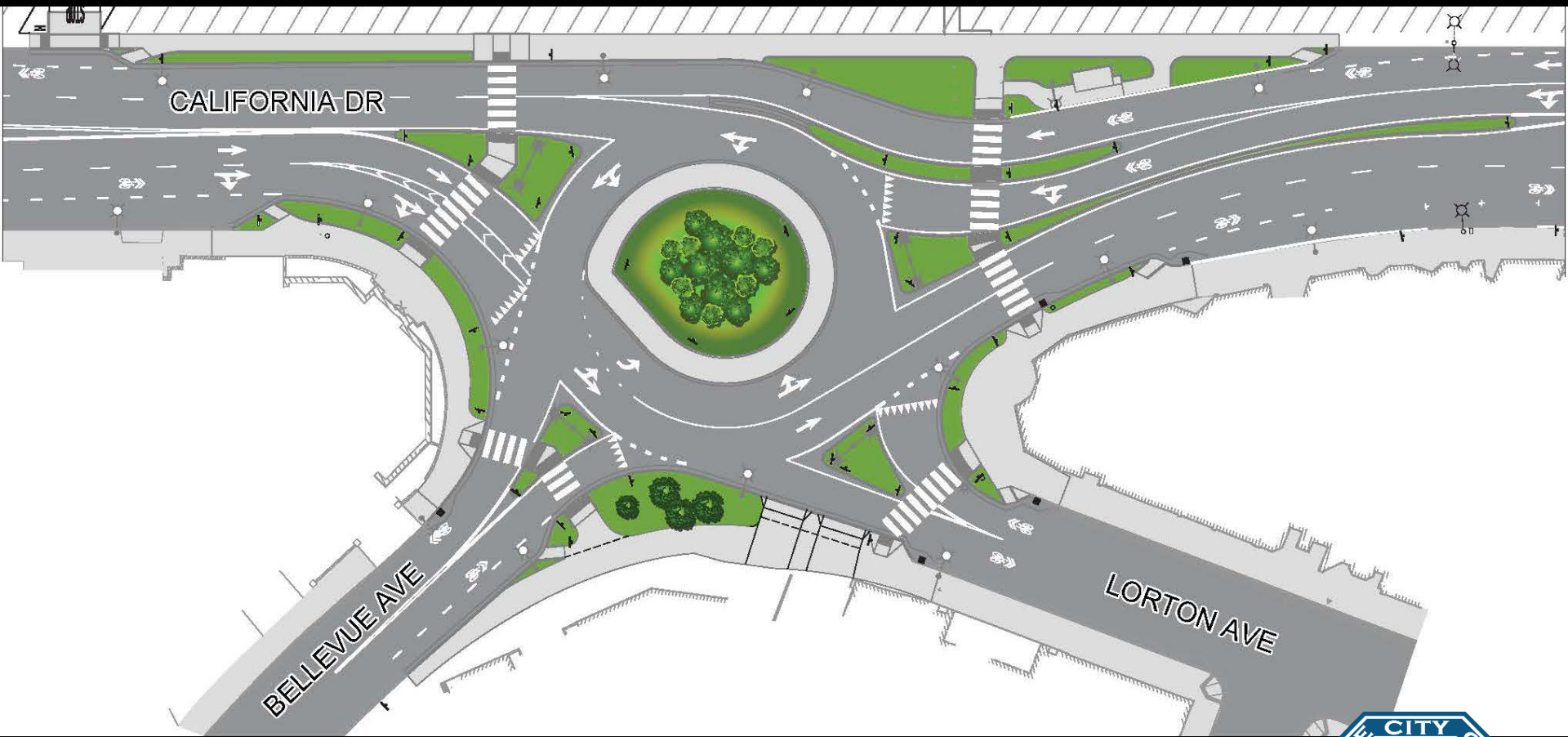


Design Alternatives Considered

- Standard traditional traffic signal
- Stop sign installations
- Roundabout
 - Traffic studies and simulations showed the roundabout as the most superior design option



Conceptual Design



Public Outreach

- Held multiple community workshops
- Meetings with business districts and merchants
- Meetings with adjacent property owners
- Meetings with Bicycle/Pedestrian Advocacy Group
- Meetings with City Council and Traffic Safety Commission
- Social media campaign, mailings, and website updates

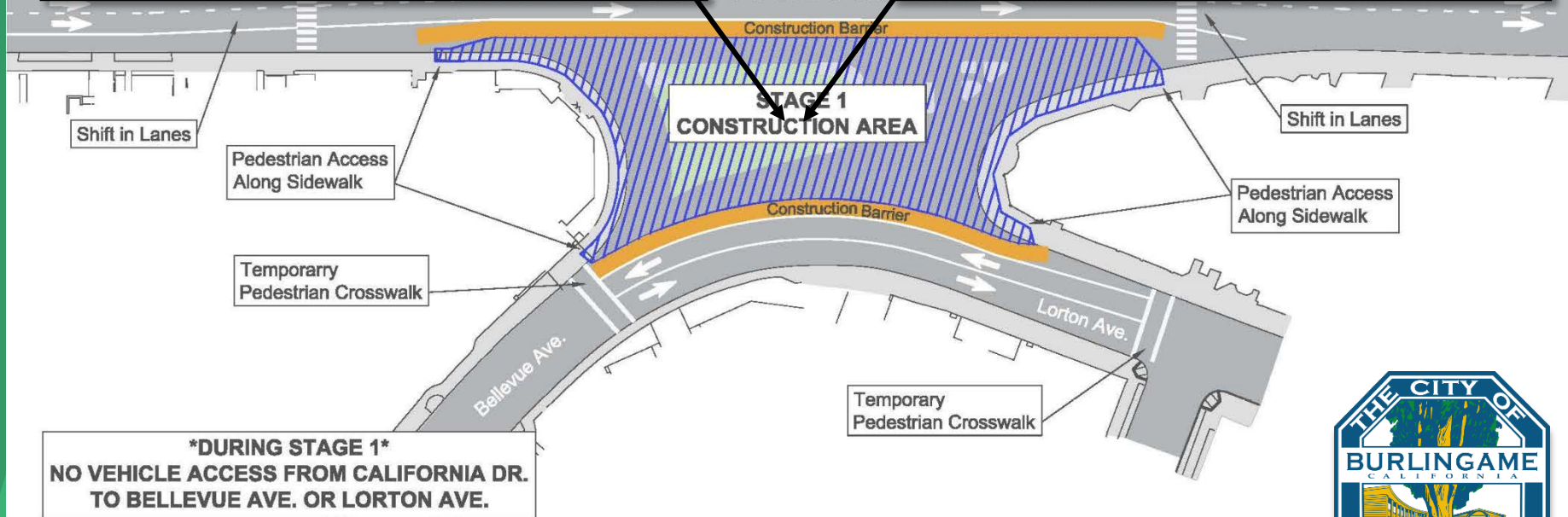


Project Funding

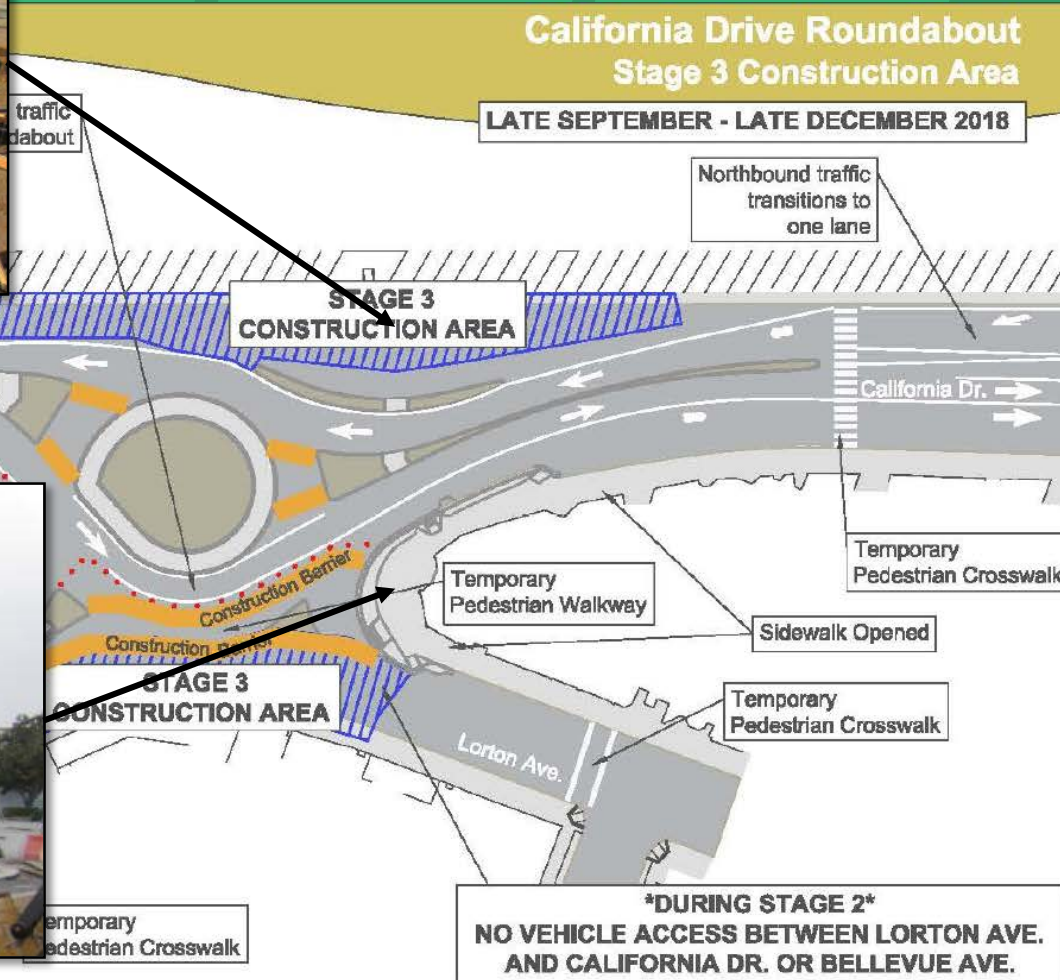
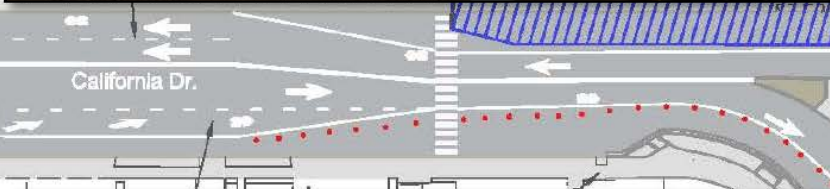
- Total construction cost approximately \$3.4M
- Received \$1M from San Mateo County Transportation Authority as Measure A Grant



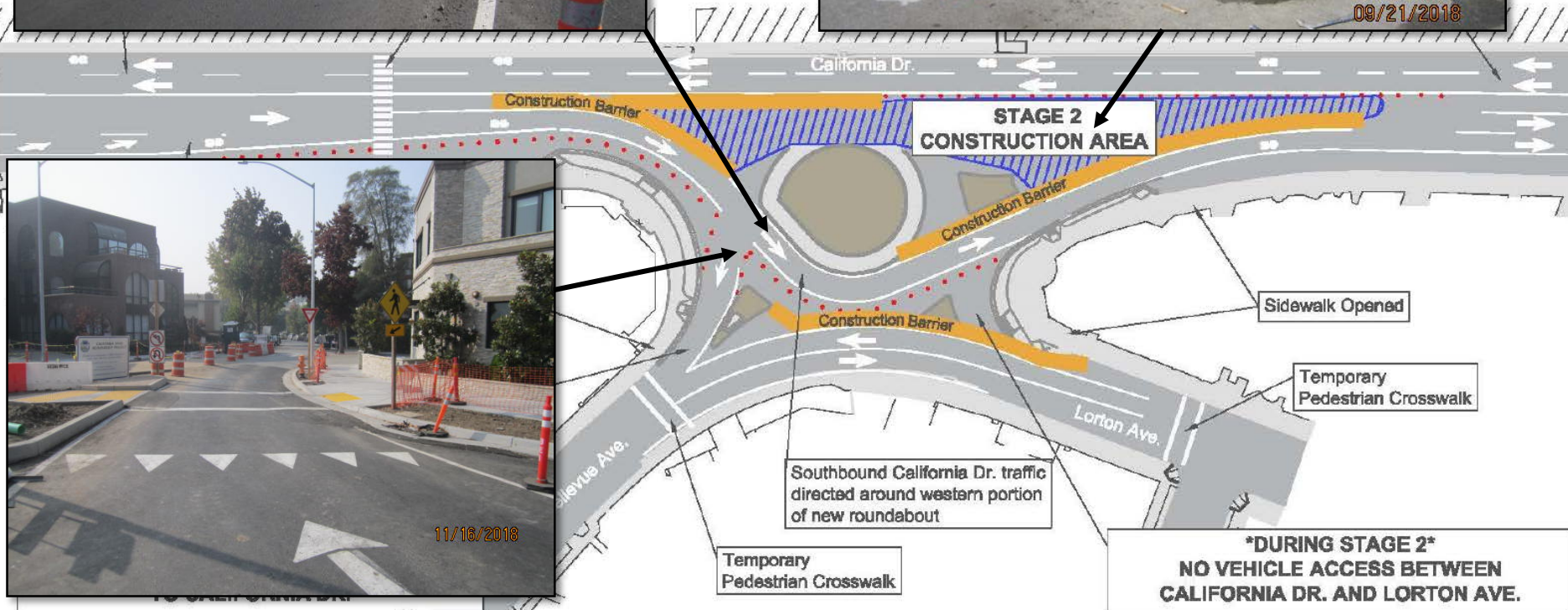
Construction: Stage 1



Construction: Stage 2



Construction: Stage 3



Construction Photos



Completed Project Photos



Construction Challenges

- Maintaining unimpeded traffic circulation on California Drive
- Impacts to adjacent businesses
- Educating community during construction, especially when portions of the new alignment opened up in different stages
- Weather, as final stage was anticipated during winter
- Utility improvements



Lessons Learned/Closing Thoughts

- Community buy-in for the roundabout concept
- Education and outreach during design
- Minimizing impacts to businesses during construction
- Post construction feedback and monitoring
- Despite early apprehension among certain quarters of the community, the project is well received and we now have believers as the project has significantly improved safety for all modes



Questions/Comments

