

San Pablo Ave Green Stormwater Spine

August 18, 2021

San Mateo Countywide Water Pollution Prevention Program C3
Workshop



San Francisco
ESTUARY PARTNERSHIP

Federal, State, Local Partnerships



- Collaborative, Non-regulatory Public Agency
- Protect and improve water quality & habitats
- *Estuary Blueprint* – 5-year workplan

Project Concept Overview

Design/Build	7 green street retrofits in 7 cities
Treat	7 acres of impervious surface run-off (cumulatively)
Emphasize	Bay-Friendly Rated, vegetated approaches
Monitor	Treatment efficacy
Maintain	2-year plant establishment





Key Project Goals

Demonstrate	Multiple Benefits of GSI
Improve	Water Quality
Increase	Public Awareness & Understanding
Grow	Public Agency Acceptance & Capabilities
Transform	Public Right-of-Way



Project Team and Funders

Task	Project Team	Funder	Amt
Plans, Specs, Engineering, Interpretive Signage	Wilsey Ham (civil engineering), Quadriga (landscape design), Kevin Robert Perry (visioning)	US EPA/DWR-IRWM/ MTC-BATA	\$450K
Construction Management, Water Quality Monitoring	MNS Engineering (CM), San Francisco Estuary Institute (Monitoring)	DWR-IRWM/ MTC-BATA	\$2M*
Construction Activities, Plant Establishment	Ghilotti Bros, Inc.	Caltrans/ MTC-BATA	\$1.8M*
El Cerrito 3 Site - Standalone	Same as above	NRA-Strategic Growth Council/ MTC-BATA	\$720K*
Total			\$4.97M*

An aerial photograph of a large body of water, likely a bay or estuary, with a green overlay at the bottom. The water is a deep blue, and the surrounding land is a mix of green grass and brownish soil. In the distance, a line of wind turbines is visible on the horizon under a clear blue sky with some wispy clouds. The green overlay at the bottom contains the text "Project Sites Constructed" in white.

Project Sites Constructed



San Francisco
ESTUARY PARTNERSHIP



Berkeley Site – Before



Berkeley Site – Concept Plan



- ① Stormwater curb extensions capture runoff from San Pablo Avenue.
- ② Grated trench drains allow stormwater to flow into adjacent sidewalk planter.
- ③ Existing private landscaping/signage/utilities are retained.
- ④ Sidewalk planter accepts stormwater from San Pablo Avenue. A small concrete curb wall helps provide grade separation and protection of existing signs and utilities. This will require acceptance and coordination of improvements with private owner.
- ⑤ An existing vegetated swale is modified to capture stormwater from both San Pablo Avenue and McDonald's parking lot. This will require acceptance and coordination of improvements with private owner.
- ⑥ Grated trench drains allow stormwater overflow to flow into a stormwater curb extension in San Pablo Avenue.
- ⑦ All existing trees are retained with streetscape improvements.
- ⑧ Boardwalk allows stormwater to follow under pedestrian pathway.

San Pablo Avenue Green Stormwater Spine Project

[new-client]

Nevue|Nean|Associates

QUADRIGA
landscape architecture and planning, inc.

WILSEY
HAM



San Francisco
ESTUARY PARTNERSHIP

August 18, 2021

Berkeley Site – Existing & Rendering



Berkeley Site - After

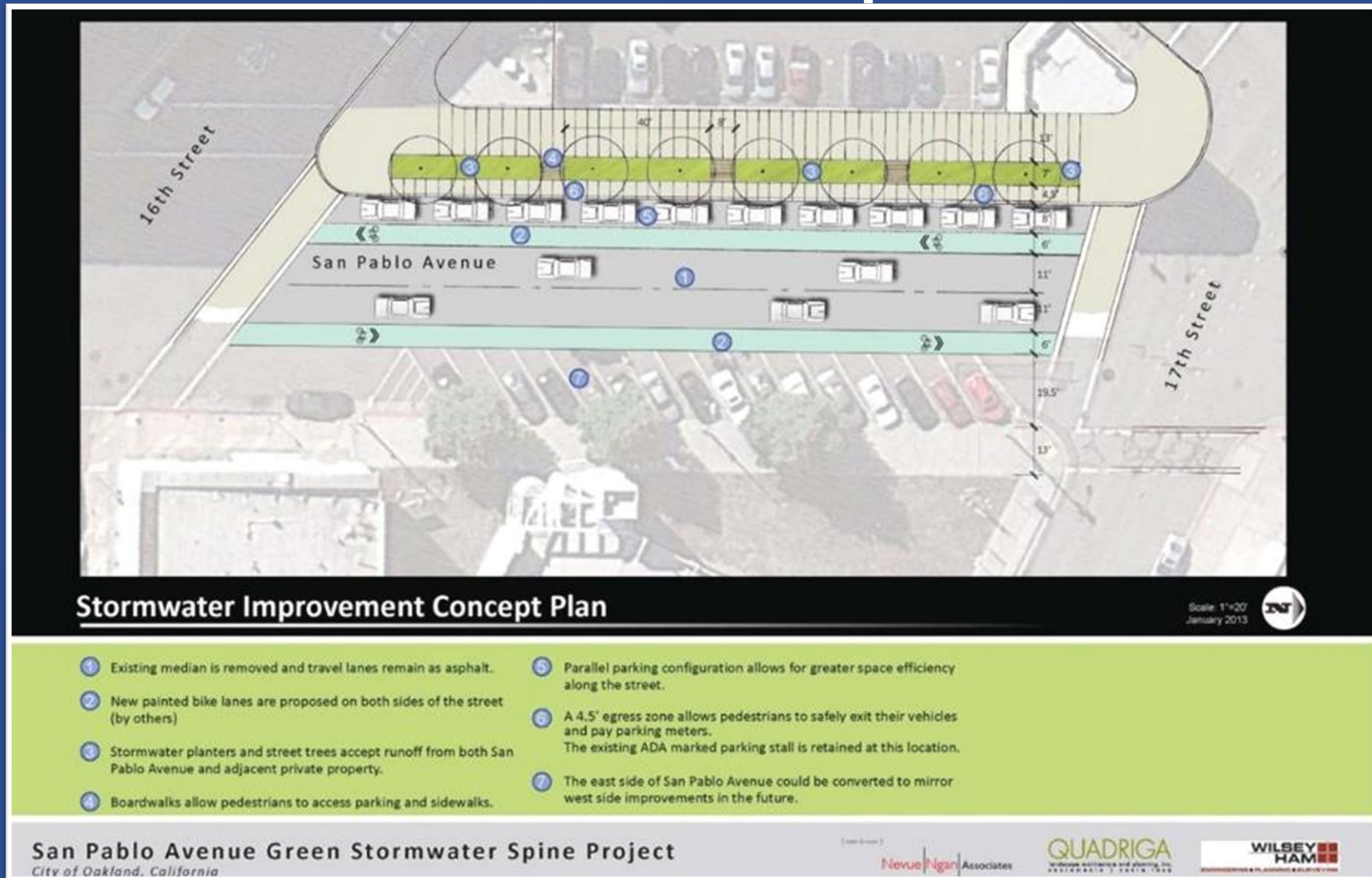




Oakland Site - Before



Oakland Site – Concept Plan



Oakland Site – Existing & Rendering







El Cerrito Site - Before



El Cerrito Site – Concept Plan



El Cerrito Site - Existing



El Cerrito (Urban Greening Site)
Maeser Lane and San Pablo Avenue

Nevue|Ngon|Associates

QUADRIGA
landscape architecture

**WILSEY
HAM**
landscape architecture



San Francisco
ESTUARY PARTNERSHIP

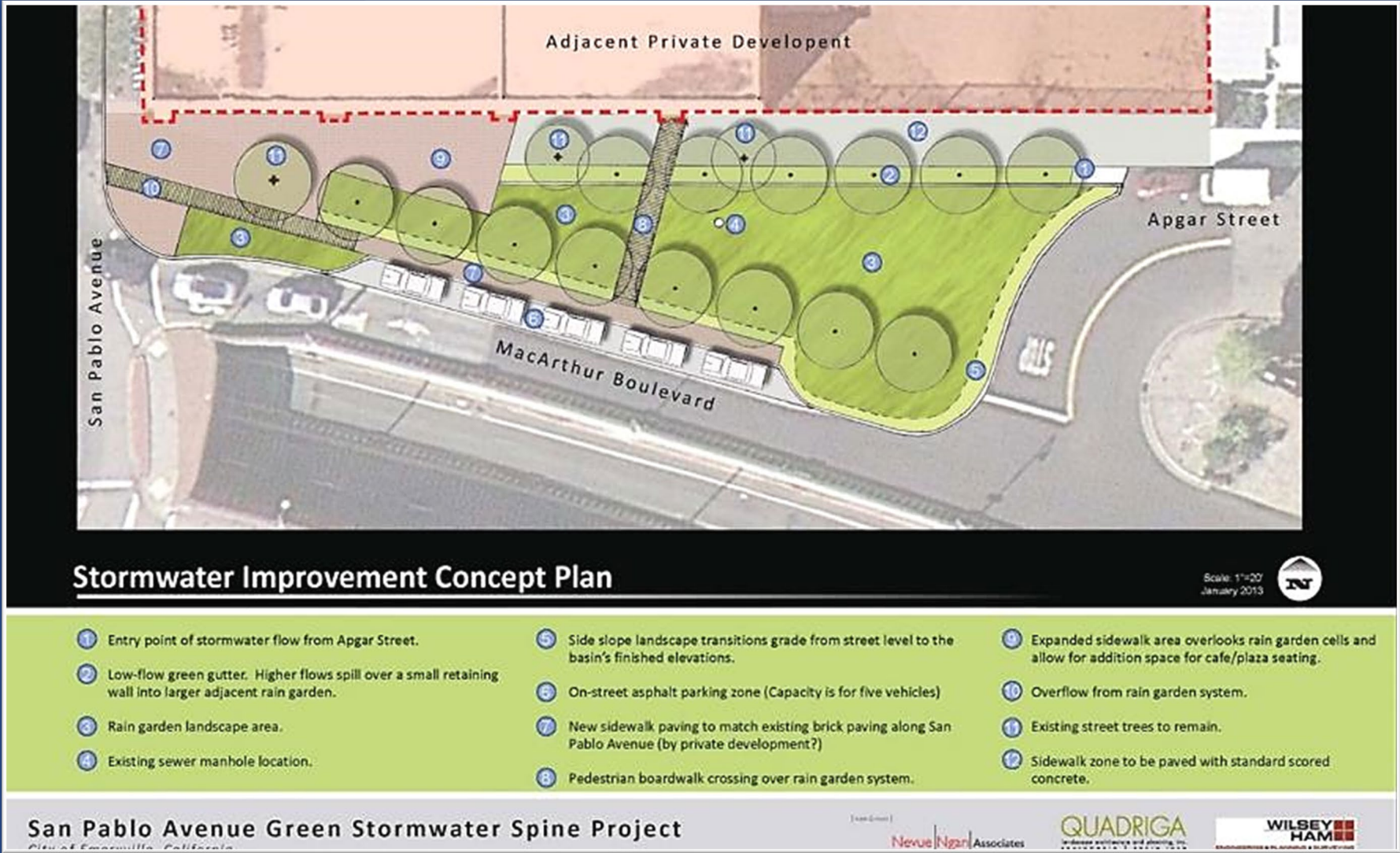




Emeryville Site - Before



Emeryville Site – Concept Plan



Emeryville Site - Existing

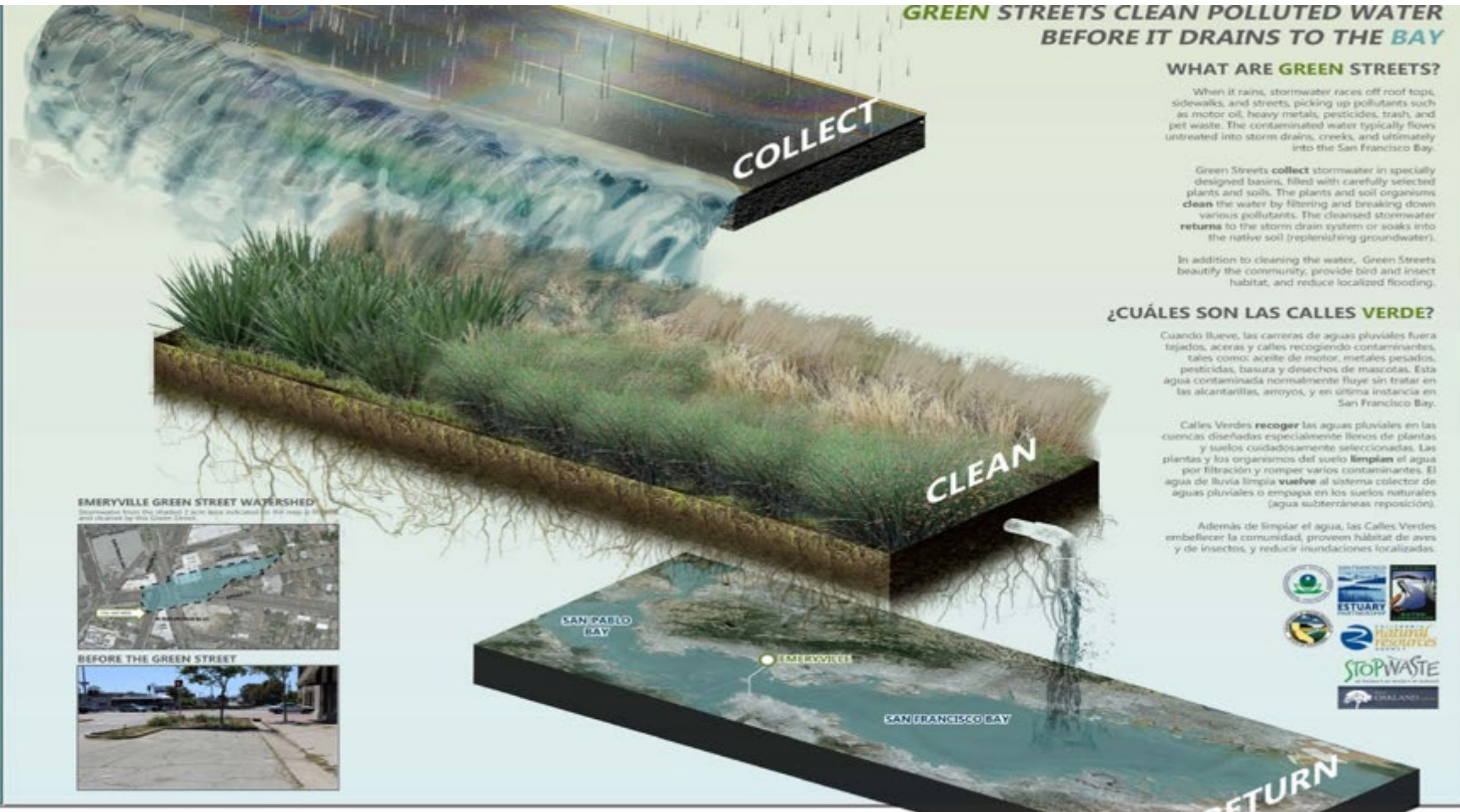


Emeryville Site
Aggar Street and San Pablo Avenue

Emeryville Site - After



GREEN STREETS BLUE BAY



Challenges & Lessons



Major Lessons Learned

Integrate GSI into larger street improvement project

\$\$ for utility investigations, coordination & accommodation

Limit project to 2-3 separate jurisdictions

Need active participation & support from municipal partners!!

Be flexible: build low- hanging fruit projects earlier

Communication critical: partners, funders, impacted businesses/residents

Any problem is solvable with enough time & money



Thank You



Have Questions?

Josh Bradt | Project Manager

o 415.778-6671 | c 510.292.7240

Josh.bradt@sfestuary.org

sfestuary.org