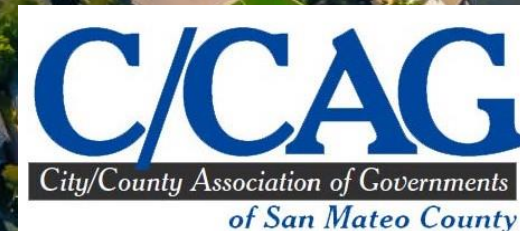




Using Data to Inform Municipal Trash Source Control Policies and Improve Water Quality

SMCWPPP 5th Litter Work Group Roundtable – September 1, 2022





Agenda

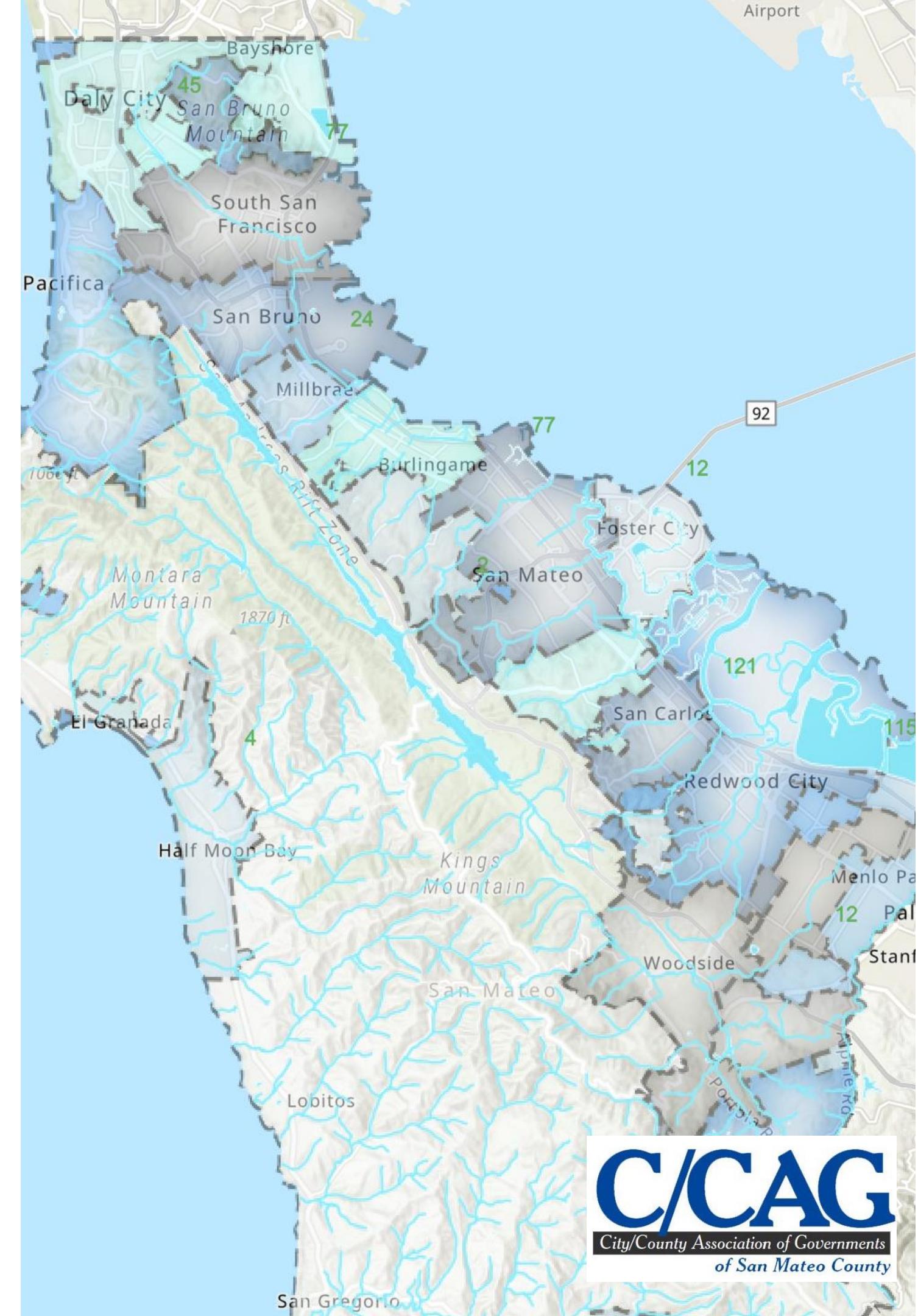
1. Intro/Welcome – C/CAG: Reid Bogert
2. SMCWPPPP LWG Trash Characterization Study – EOA: Chris Sommers
3. San Mateo County Plastics Foodware Ordinance – CSM: Christopher Slafter
4. Half Moon Bay Plastics Foodware Ordinance – HMB: Veronika Vostinak
5. Reusable SMC – Plastic Free Future and Reusable SMC: Alejandra Warren
6. Panel Discussion on Litter Source Controls – Peter moderating: Chris, Reid, Christopher

SMCWPPP Background

The Countywide Stormwater Program has provided technical assistance to C/CAG's 21 member agencies and OneShoreline in compliance with state-mandated municipal stormwater regulations since the early 1990s

Focus Areas:

- Local, countywide and regional compliance support
- Funded by countywide property fee (\$1.5M) and \$10 vehicle registration fee (\$1M)
- Focus on key pollutants:
 - Trash
 - PCBs/mercury
 - Pesticides
 - Emerging Contaminants



SMCWPPP Litter Work Group

- Work Group of Trash Subcommittee:
 - Initially convened in 2014
 - Brings together municipal staff and franchised haulers
 - Meets several times per year
 - Holds Roundtable Events focused on specific topics
- Work Group goals: to collectively identify opportunities to reduce the contributions of litter generated from disposal, collection-associated sources and illegal dumping; educate the public and those involved with litter control efforts; and to coordinate and share information with the Zero Litter Initiative (ZLI) in Santa Clara County.





By 2050, we'll have produced 26 billion tons of plastic waste

Historical data and projections to 2050 of plastic waste production and disposal. "Primary waste" is plastic becoming waste for the first time and doesn't include waste from plastic that has been recycled.

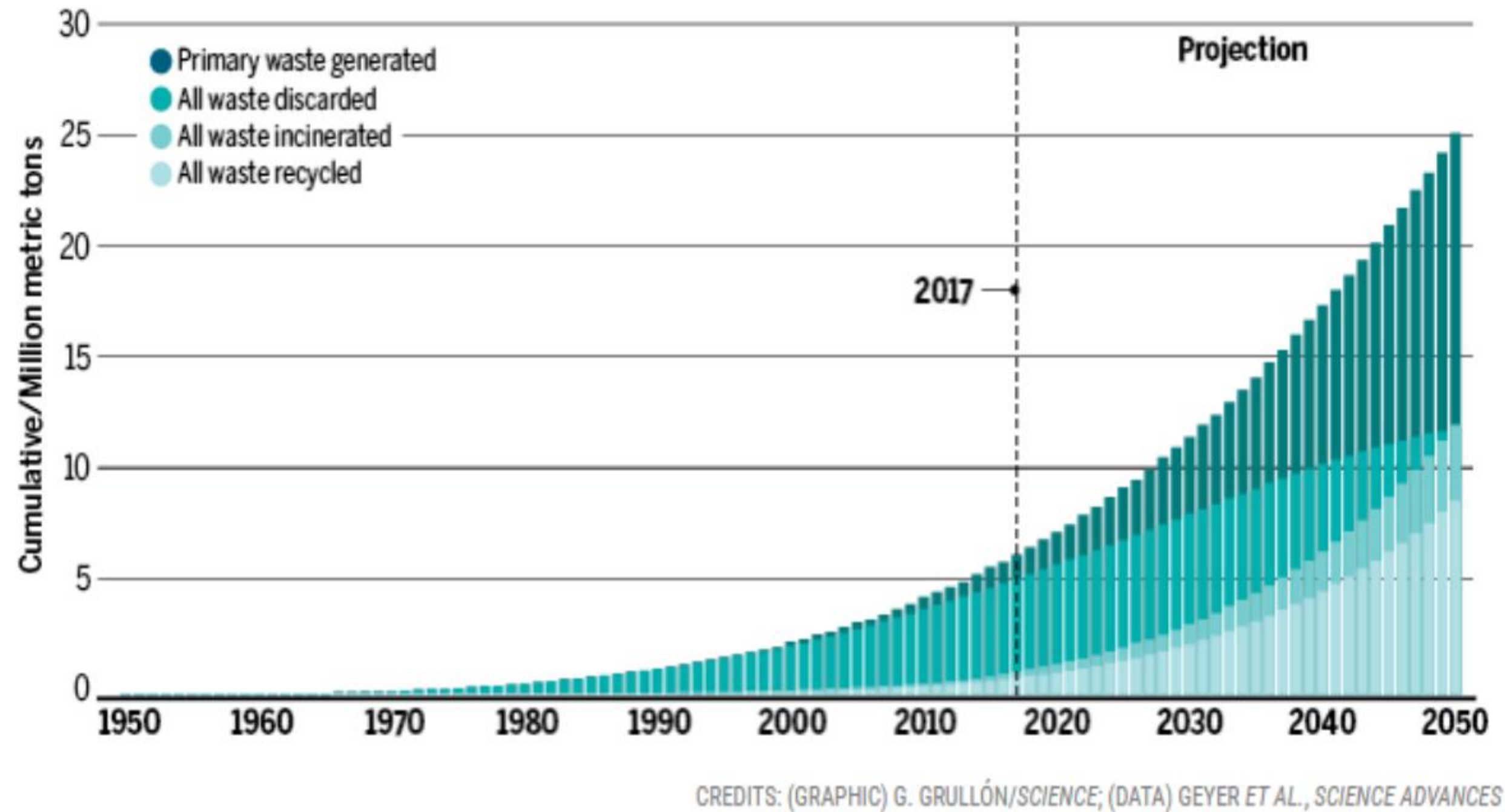


Figure 1. Documented and projected plastic waste between 1950 and 2050 (Geyer et. al. 2017).

Source: EOA, Inc. 2021

Illegal Dumping



- Many municipalities in San Mateo County grappling with ongoing or increased incidents of illegal dumping and issues of unsheltered/homeless encampments
- New MRP 3.0 requirements to evaluate impacts of unsheltered populations and develop BMP strategies

Single-use plastics remain a challenge

- Increasing presence of single-use foodware during visual assessments
- Plastics (food packaging and containers) are a uniquely challenging stormwater pollution problem

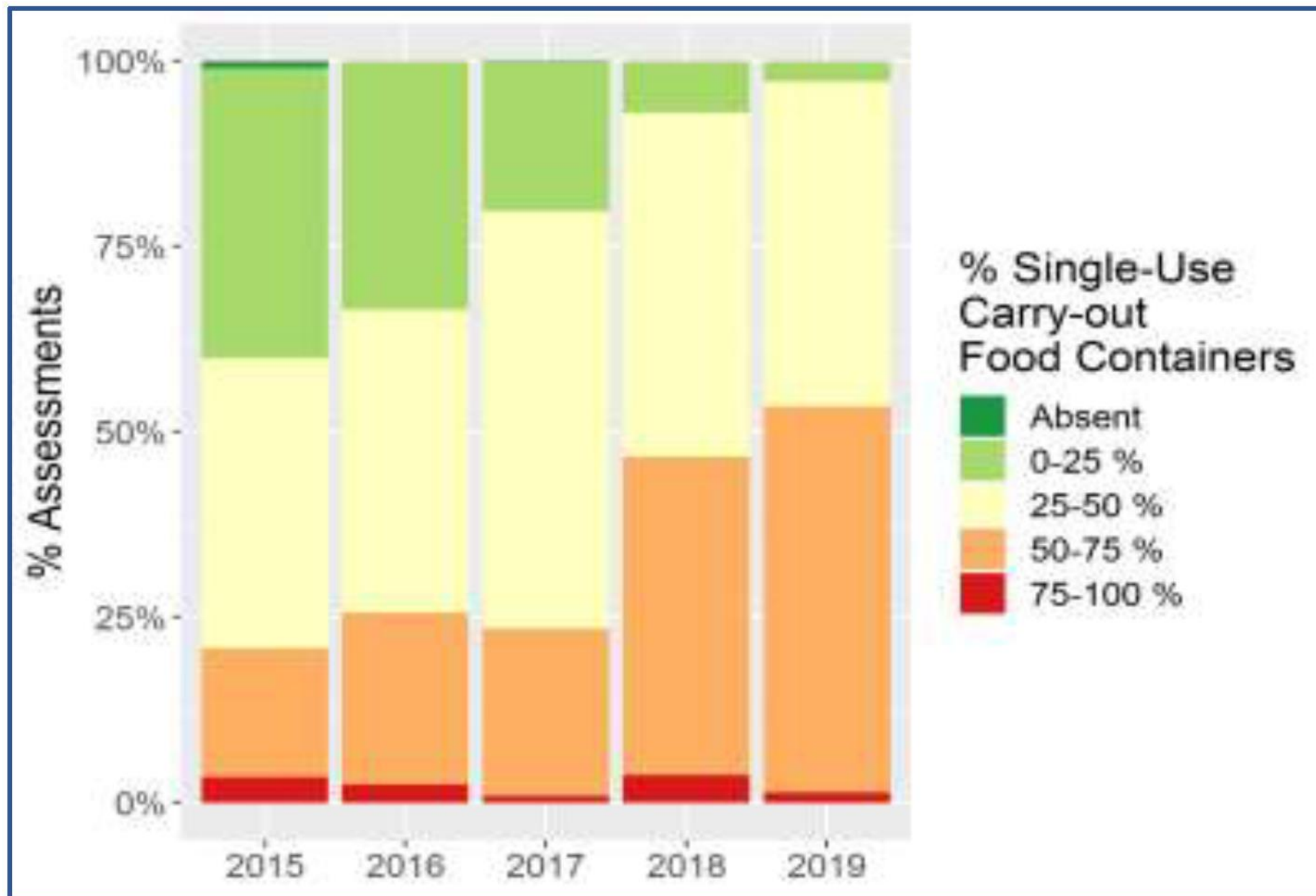
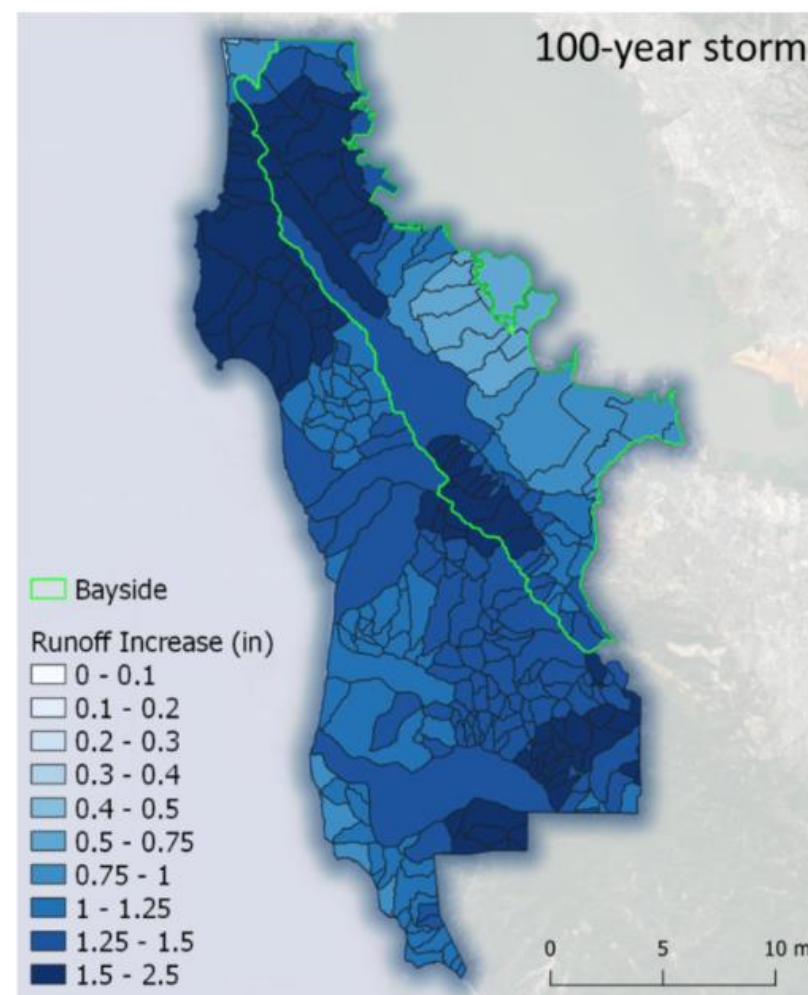
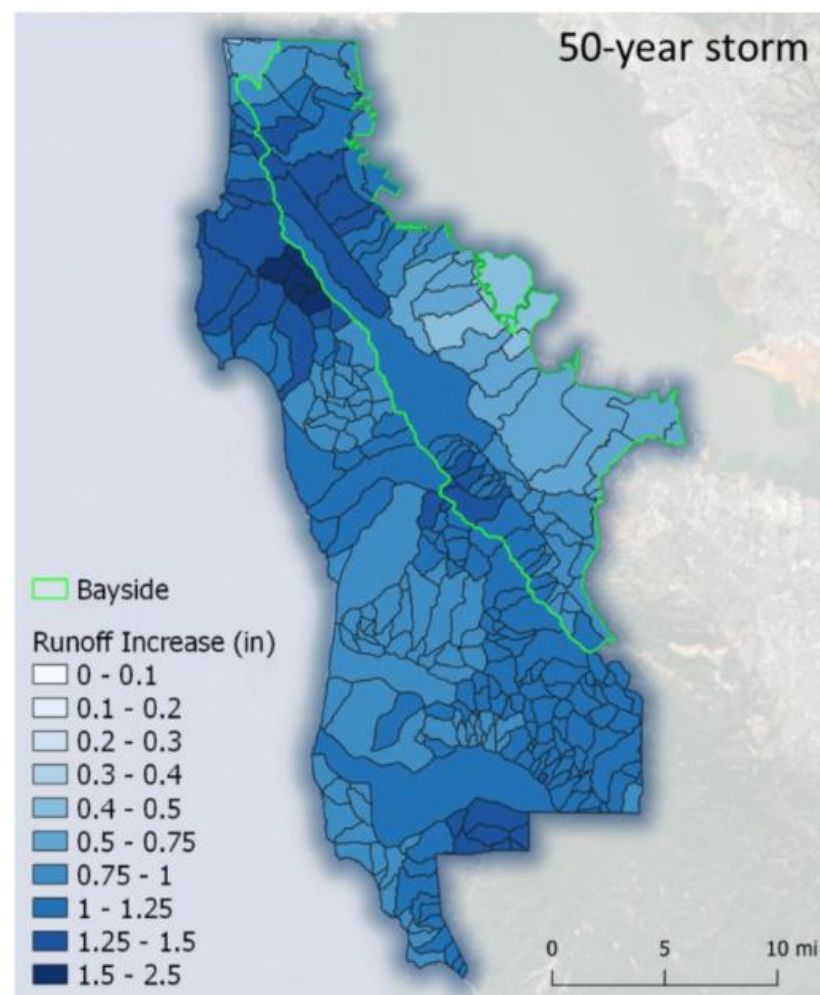
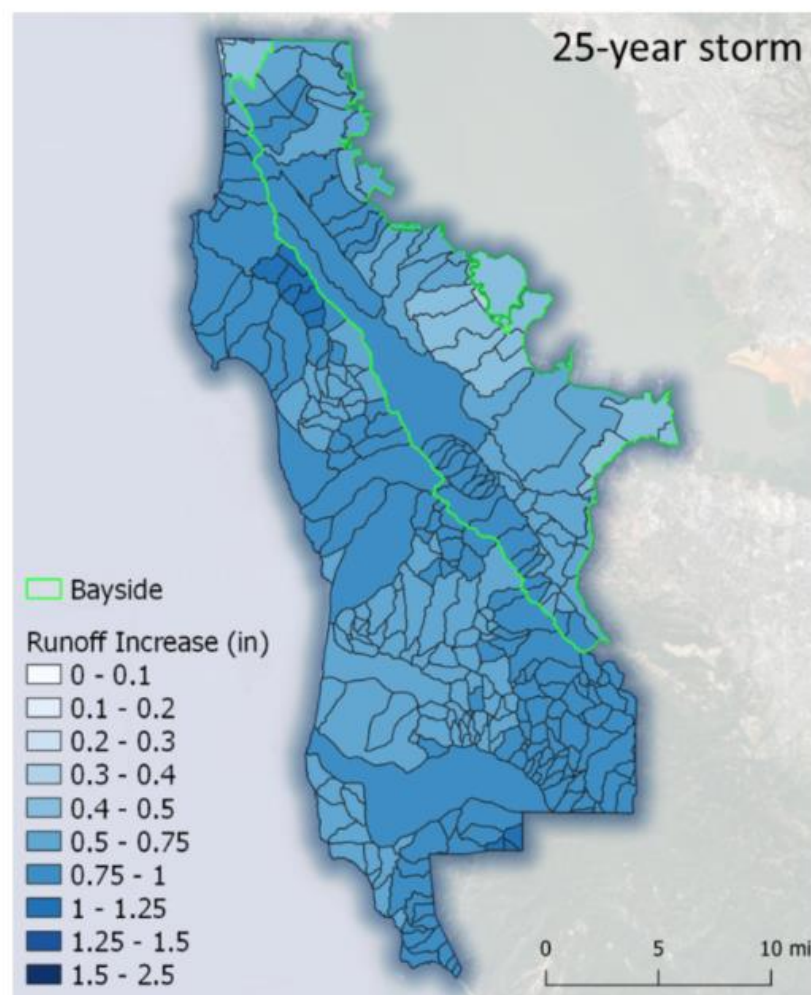
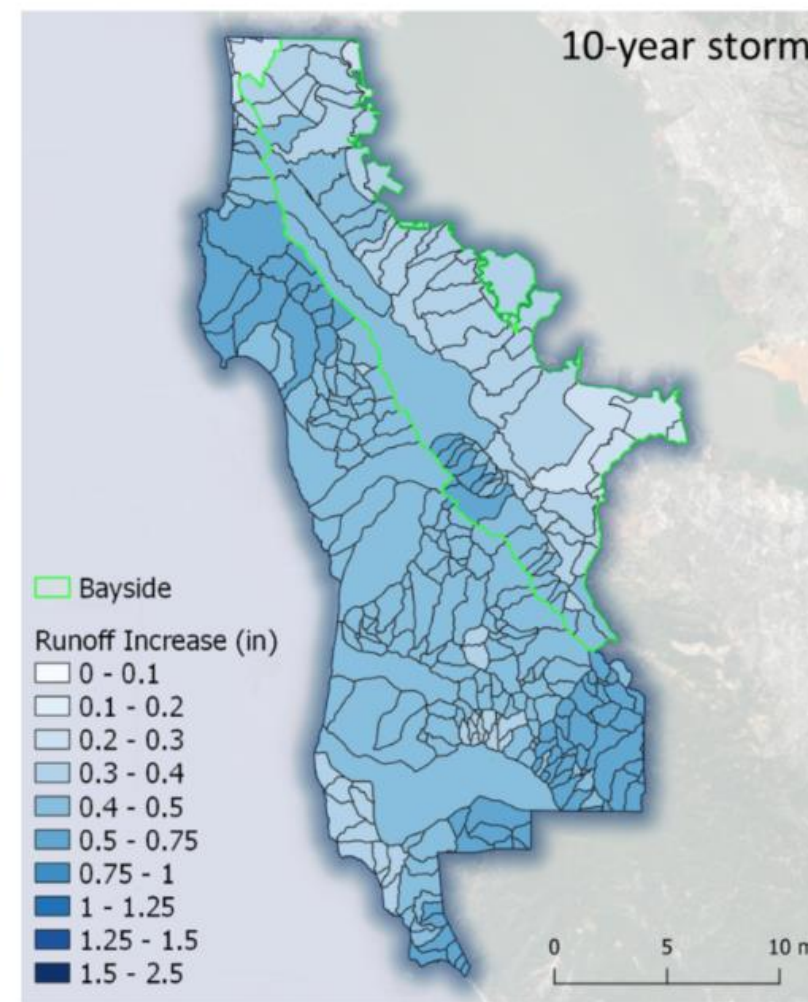
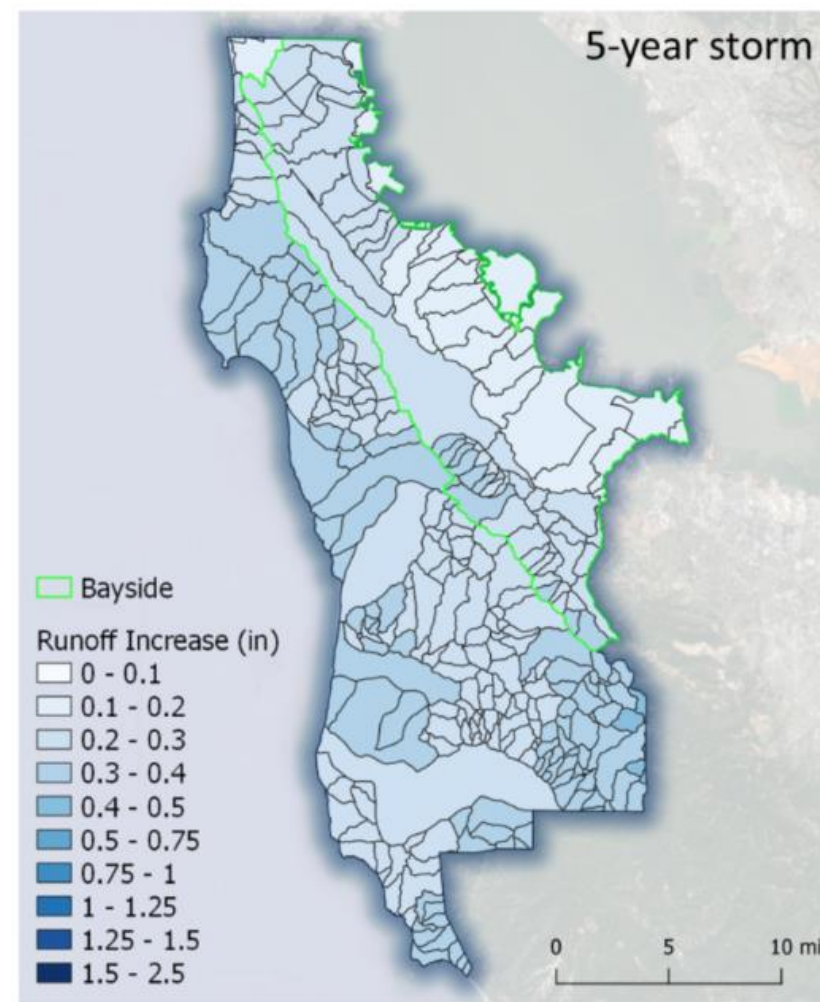
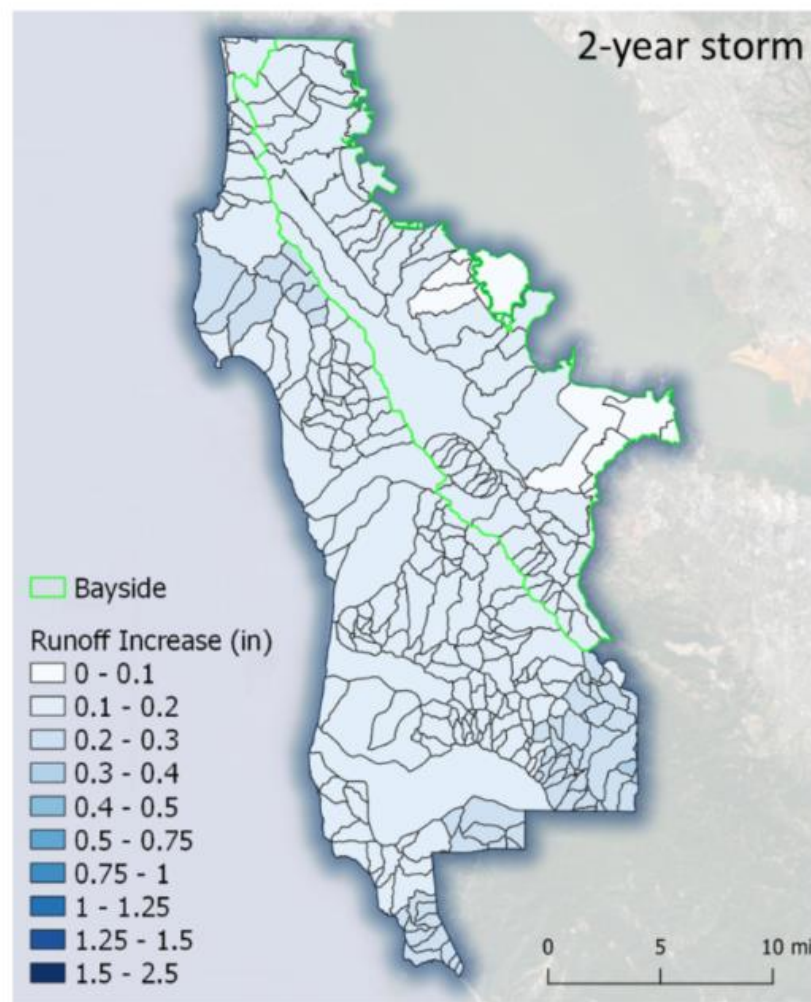


Figure 7. Upward trend in levels of single-use foodware in OVTAs (2015-2019) (Sommers and Fons, 2019)

Climate Change

- Modeled countywide changes in precipitation using 10 Climate Change Models from CalAdapt at an 8.5 RCP and downscaled to county grid
- 24% increase in storm depth for a future 10-year storm on bayside



COVID Impacts

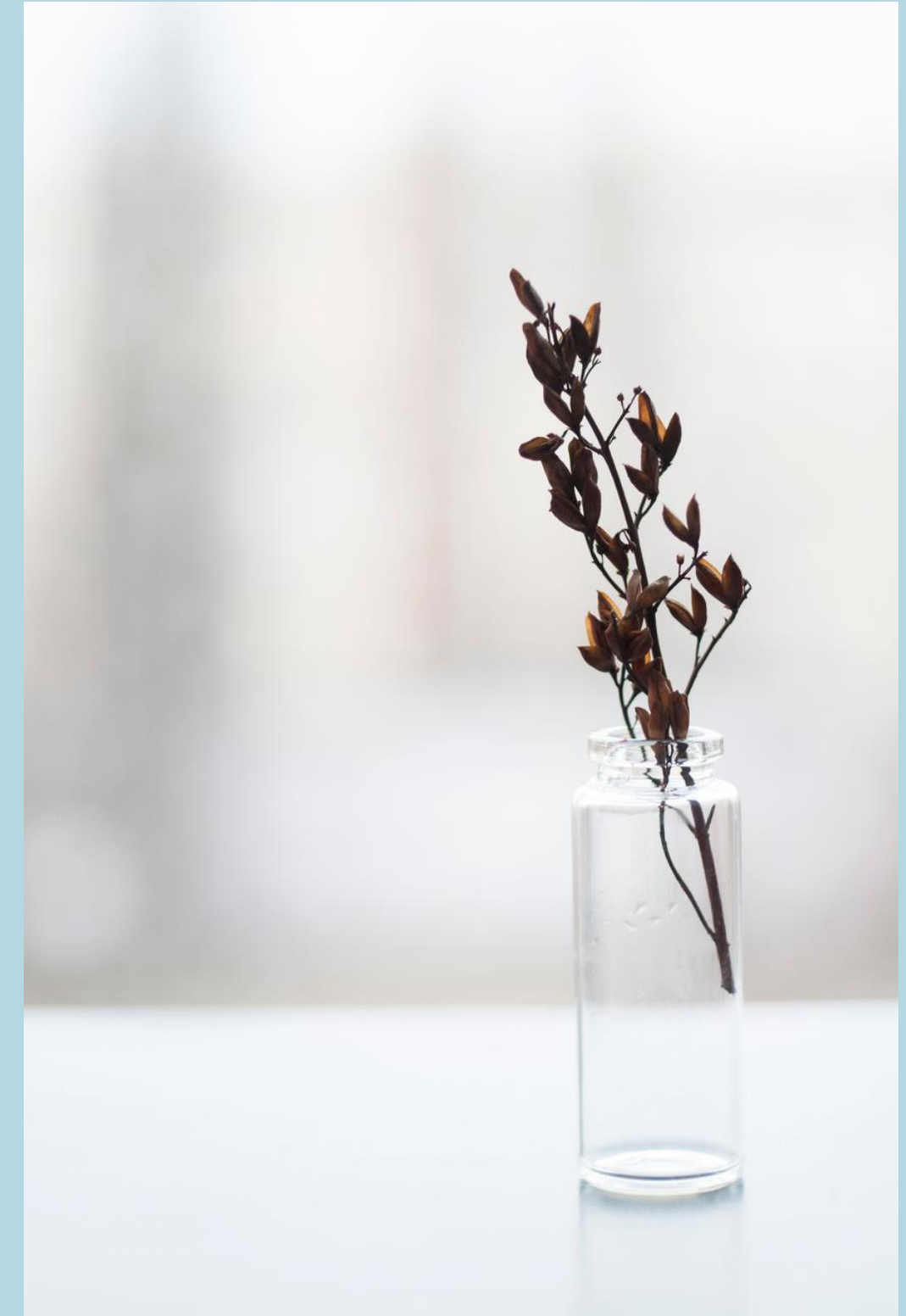
- Overall ~30% increase in average scores from FY18/19 to FY19/20
- Reduced street-sweeping freq. or effectiveness
- Reduced property management efforts/businesses closed
- Other behavior change

Table 10-2. Changes in average OVTA scores (0 to 1 – Low, 1 to 2 - Moderate, 2 to 3 – High, and 3 to 4 - Very High) on a Permittee and Countywide level in FY 2019/20.

Permittee	FY 2018/19 Average Score	FY 2019/20 Average Score	% Change
Atherton	0.26	0.25	-2%
Belmont	0.31	0.36	14%
Brisbane	1.00	1.25	25%
Burlingame	0.33	0.33	1%
Colma	0.63	0.49	-23%
Daly City	0.96	1.01	5%
East Palo Alto	0.92	1.20	30%
Foster City	0.23	0.38	60%
Menlo Park	0.31	0.55	80%
Millbrae	0.55	0.63	14%
Pacifica	0.43	0.40	-7%
Portola Valley	0.08	0.67	700%
Redwood City	0.70	0.90	27%
San Bruno	0.41	0.71	73%
San Carlos	0.37	0.41	12%
San Mateo	0.49	0.66	35%
San Mateo County	0.47	0.55	18%
South San Francisco	0.51	0.83	63%
Countywide	0.50	0.64	29%

Tools in the Box

- Remaining full trash capture opportunities are limited
- Ongoing coordination with waste haulers (right size right service, illegal dumping, communication with/outreach to property owners/managers, business inspection programs)
- Enhanced street-sweeping/enforcement
- Ongoing creek and shoreline cleanups
- Source Controls





Source Controls Work

- Since early 2010s over 100 ordinances have been adopted around the Bay to reduce Expanded Polystyrene (EPS) and single use plastic bags
- As a result, we've seen reductions of greater than 65% from 2009 baseline levels in single-use plastic grocery bags and expanded polystyrene (EPS) foodware in stormwater





THE ALBATROSS

JOIN OUR TEAM
BE AN EARTH HERO
BECOME A SITE CAPTAIN
DONATE



Outreach and Partnerships are Critical