



Landscape IPM Webinar 2023

AVNEET KAKKAR



COUNTY OF SAN MATEO





agenda

**PESTICIDE USE MONITORING
INSPECTION ~ WHAT TO
EXPECT**

COMMON VIOLATIONS

**CARBON MONOXIDE PEST
CONTROL DEVICE**



County Ag Inspector



Do you handle Pesticides?

- Mixing/Loading
- Transferring
- Applying
- Servicing or Cleaning Equipment with Residue
- Working With Open Containers





Pesticide Use Monitoring Inspection

- PPE
 - Labeling
 - Safety
 - Storage
-
- 

Pesticide Application Inspection ~ PPE

What is required by regulation? ~ CCR 6738

- One- or two-piece garment
- Closely woven fabric
- Covers the entire body except head, hands, and feet
- Provided by the employer as PPE



Pesticide Application Inspection ~ PPE

What is required by the label? ~ FAC 12973

- Long Sleeved Shirt
- Long Pants
- Shoes with Socks
- Different requirements for mix/load and application?



How to Choose Gloves

If not label specific can use:

- Rubber
- Neoprene
- Other chemical-resistant

Gloves for Handling Pesticides

Due to PPE shortage during the current COVID-19 crisis, DPR has compiled some glove-safety tips.

If you use reusable gloves, they must be the same material as label-required disposable gloves.

Chemical resistant gloves must be **at least 14 mil thick†**, so substitute for thicker gloves of the same material.

† except laminate and polyethylene gloves

Label Code	Materials Required by Law	Material Code
A	1,2,3,4,5,6,7,8	1: Laminate
B	1,2	2: Butyl
C	1,2,3,4,7,8	3: Nitrile
D	1,2	4: Neoprene
E	1,3,4,8	5: Natural
F	1,2,3,8	6: Polyethylene
G	1,8	7: PVC
H	1,8	8: Viton

All but Laminate and Polyethylene must be 14 mils or thicker

Caring for Reusable Gloves

1. Inspect your gloves before putting them on. **Never wear damaged chemical resistant gloves!**
2. Wash your hands with soap and water before you put them on.
3. Wear your gloves as required by label or regulation when performing handler tasks.
4. Wash your gloved hands with soap and water before removing gloves.
5. Dry and store your clean gloves away from pesticides, in a cool dry place, and away from direct sunlight.
6. After removing gloves, wash your hands with soap and water.

Do not touch contaminated gloves with bare hands!

Be sure to follow 3 CCR 6738. For more information go to: https://www.cdpr.ca.gov/docs/whs/ind_hygiene_ppe.htm

How to Choose Protective Eyewear

If product labeling specifies a type of eyewear, that eyewear or a **more protective type** must be worn.



American Standard – ANSI Z87.1-2003 High Impact

CCR 6738

The Employer Shall:

- Provide All Required PPE
- Daily Inspection and Cleaning
- Repair or Replace Damaged or Contaminated PPE
- Assure that PPE is Stored Correctly
- Assure that PPE is Used Correctly
- Keep and Wash Potentially Contaminated PPE
- Assure that Employees **DO NOT** Take Potentially Contaminated PPE Home



Pesticide Use Monitoring Inspection ~ Labeling

- Registered Label of Product
 - Labeling Site/Rate
 - Pesticide Container Labeling
 - Service Container Labeling
-

Registered Label of Product ~ CCR 6602 & FAC 12973

- Registered for Use in CA
- Entire Label
- Contains Information:
 - PPE
 - Site/Rate
 - Target Species
 - Environmental Hazards
 - Storage and Disposal

**LABEL IS
THE LAW**



Finale[®]

4. If the compatibility test shows signs of incompatibility, do not tank mix the product tested with FINALE Herbicide.

Weeds Controlled by FINALE Herbicide

For spot application:

Apply 2 fluid ounces per gallon of water when the weed height or diameter is less than 6 inches.
Apply 3 fluid ounces per gallon of water when the weed height or diameter is 6 inches or greater.

For broadcast application:

Apply 3 quarts per acre when the weed height or diameter is less than 6 inches.
Apply 4 quarts per acre when the weed height or diameter is 6 inches or greater.

Broadleaf Weeds

chickweed
clover
common cocklebur
filaree
jimsonweed
kochia

London rocket
malva (little mallow)
marestail
purslane
shepherdspurse
smartweed

Grasses and Sedges

barnyardgrass
cupgrass
fall panicum
giant foxtail
goosegrass
green foxtail
Johnsongrass (rhizome)
lovegrass
shattercane
smallflower Alexandergrass
(signal grass)
stinkgrass
windgrass
yellow foxtail

For spot application:

IN CASE OF MEDICAL, ENVIRONMENTAL, OR
TRANSPORTATION EMERGENCIES OR
INQUIRIES, CALL
1-800-334-7577 (24 HOURS/DAY)
For product inquiry information, call toll free:
1-800-331-2867.

Net Contents
2.5 Gallons
04193473
04323339C 080707AV1



Pesticide Container Labeling ~ CCR 6676

- Any Container That Holds or Has Held Pesticide
- When Stored Or Transported
- SHALL Carry Registrant's Label



Service Container Labeling ~ CCR 6678

- Any Container other than original
- Used to store or transport dilute or concentrated pesticide
- Name & address of the business
- Name of the pesticide
- Signal word



A black plastic lockbox is shown with its lid open. Inside the box, two blue padlocks are visible, secured by a metal bar. A yellow key is placed on the surface next to the box. The lid of the box has some text on it, including "LOCKBOX" and "1000". The box has a circular opening on the side.


STATION #		CAUTION RODENTICIDE		NAME	FORM	CONC.	EPA REG#
<div> <div>SERVICE RECORD</div> <div>COMPANY</div> <div>NAME</div> </div>		<div> <div>IN case of an emergency, call your local Poison Control Center or 1-877-854-2494</div> </div>		Contract® Blox	A.I. Bromadiolone	0.005%	12455-79
<div> <div>PHONE NUMBER</div> </div>				Contract® with Lumitrack Blox	A.I. Bromadiolone	0.005%	12455-133
				Ditraç® Blox	A.I. Diphacinone	0.005%	12455-80
				Fastrac® Blox	A.I. Bromethalin	0.010%	12455-95
				Final® Blox	A.I. Brodifacoum	0.005%	12455-89
				Final® Soft Bait	A.I. Brodifacoum	0.0025%	12455-139
				Formus® Blox	A.I. Brodifacoum	0.0025%	12455-108
				Tera3® Blox	A.I. Cholecalciferol	0.075%	12455-106
				Tera3® AG Blox	A.I. Cholecalciferol	0.075%	12455-116

STATION #		CAUTION RODENTICIDE		NAME	FORM	CONC.	EPA REG#
<div> <div>SERVICE RECORD</div> <div>COMPANY</div> <div>NAME</div> </div>		<div> <div>IN case of an emergency, call your local Poison Control Center or 1-877-854-2494</div> </div>		Contract® Blox	A.I. Bromadiolone	0.005%	12455-79
<div> <div>PHONE NUMBER</div> </div>				Contract® with Lumitrack Blox	A.I. Bromadiolone	0.005%	12455-133
				Ditraç® Blox	A.I. Diphacinone	0.005%	12455-80
				Fastrac® Blox	A.I. Bromethalin	0.010%	12455-95
				Final® Blox	A.I. Brodifacoum	0.005%	12455-89
				Final® Soft Bait	A.I. Brodifacoum	0.0025%	12455-139
				Formus® Blox	A.I. Brodifacoum	0.0025%	12455-108
				Tera3® Blox	A.I. Cholecalciferol	0.075%	12455-106
				Tera3® AG Blox	A.I. Cholecalciferol	0.075%	12455-116

STATION #		CAUTION RODENTICIDE		NAME	FORM	CONC.	EPA REG#
<div> <div>SERVICE RECORD</div> <div>COMPANY</div> <div>NAME</div> </div>		<div> <div>IN case of an emergency, call your local Poison Control Center or 1-877-854-2494</div> </div>		Contract® Blox	A.I. Bromadiolone	0.005%	12455-79
<div> <div>PHONE NUMBER</div> </div>				Contract® with Lumitrack Blox	A.I. Bromadiolone	0.005%	12455-133
				Ditraç® Blox	A.I. Diphacinone	0.005%	12455-80
				Fastrac® Blox	A.I. Bromethalin	0.010%	12455-95
				Final® Blox	A.I. Brodifacoum	0.005%	12455-89
				Final® Soft Bait	A.I. Brodifacoum	0.0025%	12455-139
				Formus® Blox	A.I. Brodifacoum	0.0025%	12455-108
				Tera3® Blox	A.I. Cholecalciferol	0.075%	12455-106
				Tera3® AG Blox	A.I. Cholecalciferol	0.075%	12455-116



Pesticide Use Monitoring Inspection ~ Safety

- Handler Training
 - Respiratory Protection Training
 - Emergency Medical Care
 - Safe Equipment
 - Protection of
Persons/Animals/Property
 - Decontamination Facility
- 

Handler Training ~ CCR 6724

- Annual Training
- DPR Specified 23 Items
- For Each Product Handled
- Keep Records for 2 Years

ANNUAL PESTICIDE HANDLER SAFETY TRAINING RECORD		
Employer/Company: _____		
Employee:	Last Name	First Name
	Signature	
Trainer:	Last Name	First Name
	Signature	
Trainer's Licenses/Qualifications:		
Employee Duties	<input type="checkbox"/> Applicator	<input type="checkbox"/> Service/Repair
	<input type="checkbox"/> Other	_____
Date of Training ____/____/____		
* Training shall be completed before the employee is allowed to handle pesticides, continually updated to cover any new pesticides that will be handled, and repeated at least annually thereafter.		
* This training shall be in a manner the employee can understand, be conducted pursuant to the written training program, and include response to questions. This record shall be retained for two years and be accessible to employees.		
* Training for employees handling pesticides used for the commercial or research production of an agricultural commodity must be at a location reasonably free from distraction and trainers must be present throughout the entire presentation.		
TRAINING TOPICS CHECK-OFF LIST		
The training shall cover, for each pesticide or chemically similar group of pesticides, to be used:		
<input type="checkbox"/> 1. Format and meaning of information, such as precautionary statements about human health hazards, contained in pesticide product labeling;		
<input type="checkbox"/> 2. Applicator's responsibility to protect persons, animals, and property while applying pesticides; and not to apply pesticides in a manner that results in contact with persons not involved in the application process;		
<input type="checkbox"/> 3. Need for limitations, appropriate use, removal, and sanitation of any required personal protective equipment;		
<input type="checkbox"/> 4. Safety requirements and procedures, including engineering controls (such as closed mixing systems and enclosed cabs) for handling, transporting, storing, disposing of pesticides, and spill clean-up;		
<input type="checkbox"/> 5. Where and in what forms pesticides may be encountered, including treated surfaces, residues on clothing, personal protective equipment, application equipment, and drift;		
<input type="checkbox"/> 6. Hazards of pesticides, including acute, chronic, and delayed effects, and sensitization effects, as identified in pesticide product labeling, Safety Data Sheets, or Pesticide Safety Information Series leaflets;		
<input type="checkbox"/> 7. Routes by which pesticides can enter the body;		
<input type="checkbox"/> 8. Signs and symptoms of overexposure;		
<input type="checkbox"/> 9. Routine decontamination procedures when handling pesticides, including that employees should:		

Handler Training ~ CCR 6724



How To Read and Understand the Label

- Precautionary statements about human health hazards

ATTENTION:
This specimen label is provided for general information only.

- This pesticide product may not yet be available or approved for sale or use in your area.
- It is your responsibility to follow all Federal, state and local laws and regulations regarding the use of pesticides.
- Before using any pesticide, be sure the intended use is approved in your state or locality.
- Your state or locality may require additional precautions and instructions for use of this product that are not included here.
- Monsanto does not guarantee the completeness or accuracy of this specimen label. The information found in this label may differ from the information found on the product label. You must have the EPA approved labeling with you at the time of use and must read and follow all label directions.
- You should not base any use of a similar product on the precautions, instructions for use or other information you find here.
- Always follow the precautions and instructions for use on the label of the pesticide you are using.

2120313-23



The complete broad-spectrum postemergence professional herbicide for industrial, turf and ornamental weed control.

Complete Directions for Use

AVOID CONTACT OF HERBICIDE WITH FOLIAGE, STEMS, EXPOSED NON-WOODY ROOTS OR FRUIT OF CROPS, DESIRABLE PLANTS AND TREES, BECAUSE SEVERE INJURY OR DESTRUCTION IS LIKELY TO RESULT.

GROUP

9

HERBICIDE

EPA Reg. No. 524-529 2010-1

Read the entire label before using this product.

Use only according to label instructions.

Not all products listed on this label are registered for use in California. Check the registration status of each product in California before using.

Read the "LIMIT OF WARRANTY AND LIABILITY" statement at the end of the label before buying or using. If terms are not acceptable, return at once unopened.

THIS IS AN END-USE PRODUCT. MONSANTO DOES NOT INTEND AND HAS NOT REGISTERED IT FOR REFORMULATION. SEE INDIVIDUAL CONTAINER LABEL FOR REPACKAGING LIMITATIONS.

1.0 INGREDIENT

ACTIVE INGREDIENT:

*Glyphosate, N-(phosphonomethyl)glycine, in the form of its isopropylamine salt.....	50.2%
OTHER INGREDIENTS (including 13% surfactant):.....	49.8%
	100.0%

*Contains 600 grams per liter or 5 pounds per U.S. gallon of the active ingredient glyphosate, in the form of its isopropylamine salt. Equivalent to 445 grams per liter or 3.7 pounds per U.S. gallon of the acid glyphosate.

This product is protected by U.S. Patent No. 4,405,531. Other patents pending. No license granted under any non-U.S. patent(s).

2.0 IMPORTANT PHONE NUMBERS

CAUSES MODERATE EYE IRRITATION

Avoid contact with eyes or clothing.

FIRST AID: Call a poison control center or doctor for treatment advice.

IF IN EYES

- Hold eye open and rinse slowly and gently with water for 15-20 minutes.
- Remove contact lenses, if present, after the first 5 minutes, then continue rinsing eye.

- Have the product container or label with you when calling a poison control center or doctor, or going for treatment.
- You may also contact (314) 694-4000, collect day or night, for emergency medical treatment information.
- This product is identified as **Roundup PRO® Concentrate Herbicide, EPA Registration No. 524-529.**

DOMESTIC ANIMALS: This product is considered to be relatively nontoxic to dogs and other domestic animals; however, ingestion of this product or large amounts of freshly sprayed vegetation may result in temporary gastrointestinal irritation (vomiting, diarrhea, colic, etc.). If such symptoms are observed, provide the animal with plenty of fluids to prevent dehydration. Call a veterinarian if symptoms persist for more than 24 hours.

Personal Protective Equipment (PPE)

Applicators and other handlers must wear: long-sleeved shirt and long pants, shoes plus socks. Follow manufacturer's instructions for cleaning/maintaining Personal Protective Equipment (PPE). If there are no such instructions for washables, use detergent and hot water. Keep and wash PPE separately from other laundry.

Discard clothing and other absorbent materials that have been drenched or heavily contaminated with this product's concentrate. Do not reuse them.

When handlers use closed systems, enclosed cabs or aircraft in a manner that meets the requirements listed in the Worker Protection Standard (WPS) for agricultural pesticides (40 CFR 170.240 (d) (4-6)), the handler PPE requirements may be reduced or modified as specified in the WPS.

IMPORTANT: When reduced PPE is worn because a closed system is being used, handlers must be provided all PPE specified above for "applicators and other handlers" and have such PPE immediately available for use in an emergency, such as a spill or equipment breakdown.

User Safety Recommendations

Users should:

- Wash hands before eating, drinking, chewing gum, using tobacco or using the toilet.
- Remove clothing immediately if pesticide gets inside. Then wash thoroughly and put on clean clothing.

3.2 Environmental Hazards

Do not apply directly to water, to areas where surface water is present or to intertidal areas below the mean high water mark. Do not contaminate water when cleaning equipment or disposing of equipment washwaters.

3.3 Physical or Chemical Hazards

Spray solutions of this product can be mixed, stored and applied using only stainless steel, fiberglass, plastic or plastic-lined steel containers.

DO NOT MIX, STORE OR APPLY THIS PRODUCT OR SPRAY SOLUTIONS OF THIS PRODUCT

Handler Training ~ CCR 6724

Safe Application of Pesticides

- Do Not Apply in a Manner that Results in Contact with Persons Not Involved in Application
- Environmental Concerns



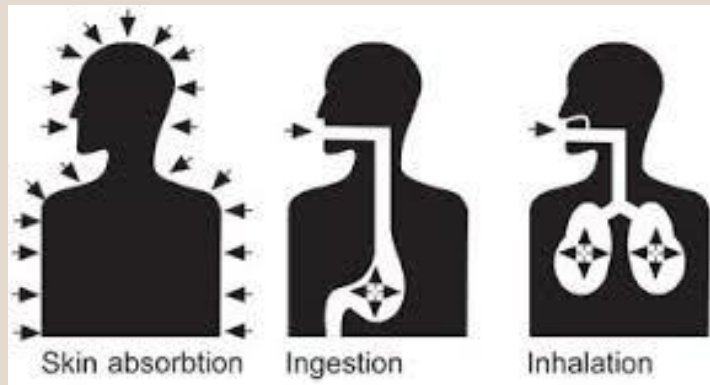


Handler Training ~ CCR 6724

- PPE
- Routine Decontamination
- First Aid



Handler Training ~ CCR 6724



- Risks & Symptoms of Exposure
- Treated surfaces
- Residues on clothing, PPE, application equipment
- Drift
- Emergency Medical Care

Handler Training ~ CCR 6724

Protecting You
and Your Family

**NEVER TAKE
PESTICIDES HOME**



Handler Training ~ CCR 6724

The Employee's **Rights**:

- Receive Information About Pesticides
- Physician to Receive Information About Pesticides
- Protected Against Retaliatory Action
- Report Suspected Use Violations

Respiratory Protection ~ CCR 6739

- Respirator Required by Label or Employer Policy
- Voluntary Use Exemption ~ Filtering Facepiece
- Elastomeric and Employer Provided?

TRAINING IS REQUIRED



Respiratory Protection Training ~ CCR 6739

- How to Select a Respirator
- Medical Evaluation
- Fit Testing
- Proper Use
- Maintenance & Storage



Emergency Medical Care ~ CCR 6726

- Arranged in Advance by Employer
- Medical Facility Info **POSTED**

EMERGENCY MEDICAL CARE IS AVAILABLE TWENTY-FOUR (24) HOURS
A DAY AT THE FOLLOWING FACILITIES:

<u>HOSPITAL</u>	<u>ADDRESS</u>	<u>PHONE</u>
SETON MEDICAL CENTER	1900 Sullivan Ave. Daly City	991-6892
KAISER	1200 El Camino Rl. South San Francisco	742-2511
SETON MEDICAL CENTER	Marine Blvd. & Etheldore Moss Beach	563-7100
PENINSULA	1783 El Camino Rl. Burlingame	696-5500
SAN MATEO COUNTY GENERAL	222 W. 39th Avenue San Mateo	573-2671
MILLS MEMORIAL (Standby ER)*	100 S. San Mateo Dr. San Mateo	696-4500
*Will accept emergencies, but patients requiring overnight hospitalization will be transferred.		
KAISER	1150 Veterans Blvd. Redwood City	299-2200
SEQUOIA	170 Alameda Whipple Ave.& Alameda Redwood City	367-5541
STANFORD	300 Pasteur Dr. Palo Alto	723-5111

THE EMPLOYER SHALL MAKE **PRIOR** ARRANGEMENTS FOR EMERGENCY MEDICAL CARE FOR ALL EMPLOYEES HANDLING PESTICIDES AND SHALL POST IN A PROMINENT PLACE AT THE WORK SITE THE NAME, ADDRESS AND TELEPHONE NUMBER OF THE PHYSICIAN, CLINIC OR HOSPITAL EMERGENCY ROOM PROVIDING CARE.

IMMEDIATE MEDICAL EMERGENCY: Dial **911**
SAN FRANCISCO BAY AREA POISON CENTER: 1-800-523-2222

Emergency Medical Care ~ CCR 6726

- In Case of a Potential Exposure Employer Must Provide Immediate Transportation to Facility
- Employer Must Provide:
 - Product Names
 - SDSs
 - EPA Registration #s
 - Active Ingredients
 - Exposure Details



Safe Equipment ~ CCR 6742

- All Equipment Used by Employees to Apply or Mix and Load Any Pesticides
- Good Repair & Safe to Use
- No Leaks
- Clean Nozzles



Safe Equipment ~ CCR 6742

- Safety defects must be repaired before use.
- Tank openings must have covers.
- Warning or Danger Pesticides



Protection of Persons/Animals/Property ~ CCR 6614

- Are there people or animals present?
- Are bees actively foraging?
- Is it windy?
- Is it raining?





Decontamination Facility ~ CCR 6734

WARNING OR DANGER PESTICIDES

- Within 100 feet of the mixing and loading site:
 - Sufficient water
 - Sufficient soap
 - Sufficient single use towels
 - One clean change of coveralls at each decontamination site





What Does Sufficient Water Mean?

- 3 Gallons per Handler
- Running Tap within 100 Feet



Decontamination ~ Eye Flushing

- Currently not Required by Regulation for Non-Production Agriculture
- **BUT HIGHLY RECOMMENDED!**
- CCR 6734 Under Review and Will Be Open for Public Comment Soon

Pesticide Use Monitoring Inspection ~ Storage

- Pesticide Storage
 - Containers Secured/Attended
 - Proper Pesticide Transport
 - PPE Storage
-



**Pesticide Storage ~
CCR 6680**

Prohibited Containers:
Food, Drink, Household Products

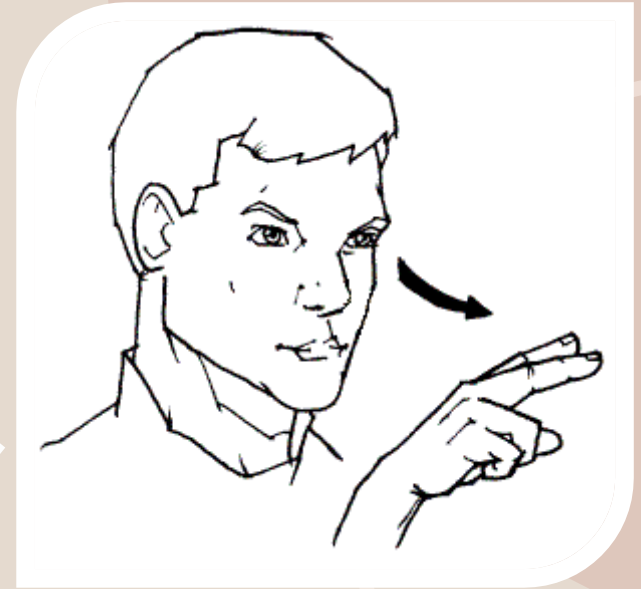
Containers Secured/Attended ~ CCR 6670

- Attended (within sight) or in a locked enclosure if they present a hazard
- Proximity to public
- Don't store pesticides inside cab



Containers Secured/Attended ~ CCR 6670

All containers or
equipment that holds
has held pesticide



Prevent Contact by
Unauthorized Persons

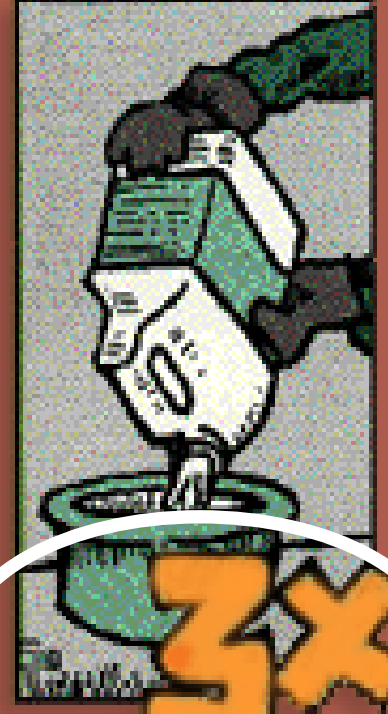
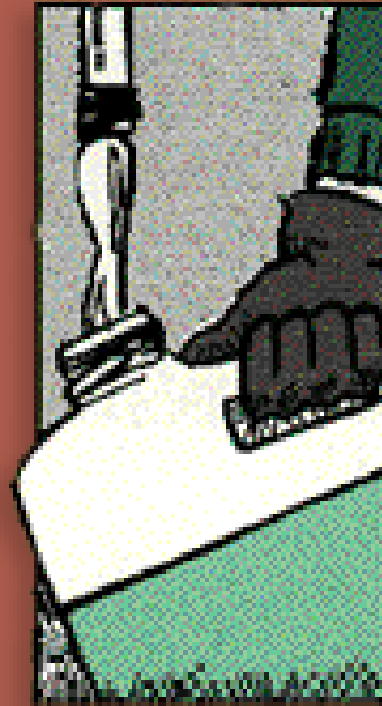
Proper Pesticide Transport ~ CCR 6682

Pesticides Shall
Not Be
Transported in
Compartment with
Persons, Feed, or
Food



Containers Properly Rinsed ~ CCR 6684

- Triple rinse **at time of use** and use rinse solution on site
- Don't transport un-rinsed containers
- Recommended: Puncture containers



PPE Storage ~ CCR 6738

All Clean PPE

Kept separate from
personal clothing



Store in Clean and
Pesticide-free, Specifically
Designated Place





DPR Business Licensing: MGB vs. Ag PCB

Landscape Businesses
Contracted by Municipalities:

MUST BE LICENSED as AG PCB

in order to
Perform Pest Control in
Rights-of-Way, Parks, Golf Courses,
Cemeteries, and Nurseries

Pesticide applications on public lands
need written recommendations from
PCA

Maintenance Gardener Business

- **Incidental** pest control along with primary gardening activities
- Mowing lawns, engaging in general yard cleanup, and/or taking care of plants and turf in:
- Outdoor ornamental and garden areas surrounding public structures
- Outdoor ornamental and garden areas surrounding commercial parks
- Parks, golf courses, cemeteries that are **separate and distinct** from the plantings that constitute open space landscaping
- QAL (B) or QAC (B or Q)

Ag PCB License Categories

- B: Landscape Maintenance~

Landscape Maintenance (Category B)

This category allows you to apply or supervise the application of restricted and general use pesticides, substances, methods, or devices to control pests in the maintenance of preexisting, planted or artificial ornamental plants and turf. This includes trees, shrubs, flowers and other plantings intended primarily for aesthetic purposes in and around habitations, buildings and surrounding grounds, including residences, parks, streets and commercial, industrial and institutional buildings. It also includes landscaped areas in enclosed shopping malls and indoor plants.

This category does not include direct application to running or standing water.

Ag PCB License Categories

C. Right-of-Way

Right-of-Way (Category C)

This category allows you to apply or supervise the application of restricted and general use pesticides, substances, methods, or devices to control pests in:

- Maintenance of roads, highways, power lines, telephone lines, pipelines, canals, railroads or other similar sites;
- Landscaped right-of-way areas.

This category does not include direct application to running or standing water.

Ag PCB License Categories

dpr **CALIFORNIA DEPARTMENT OF PESTICIDE REGULATION**
1001 I STREET
SACRAMENTO, CALIFORNIA 95814

ISSUED: January 19, 2023
EXPIRES: December 31, 2024

Pest Control Business - Branch
LICENSE
LICENSE NO. _____

Invalid if insurance and/or qualified person(s) lapse before expiration date.

Mailing Address: _____

dpr **DEPARTMENT OF PESTICIDE REGULATION**
LICENSING/CERTIFICATION PROGRAM
QAL
QUALIFIED APPLICATOR LICENSE

LICENSE #: _____ EXPIRES: 12/31/2024
Categories: BC Issued: 1/11/2023

THIS LICENSE IS NOT VALID WITHOUT THE QAL LABEL. A NEW LICENSE



This License must be shown to any representative of the Director or Commissioner upon request.

Most Common Violations

#1 PPE!!

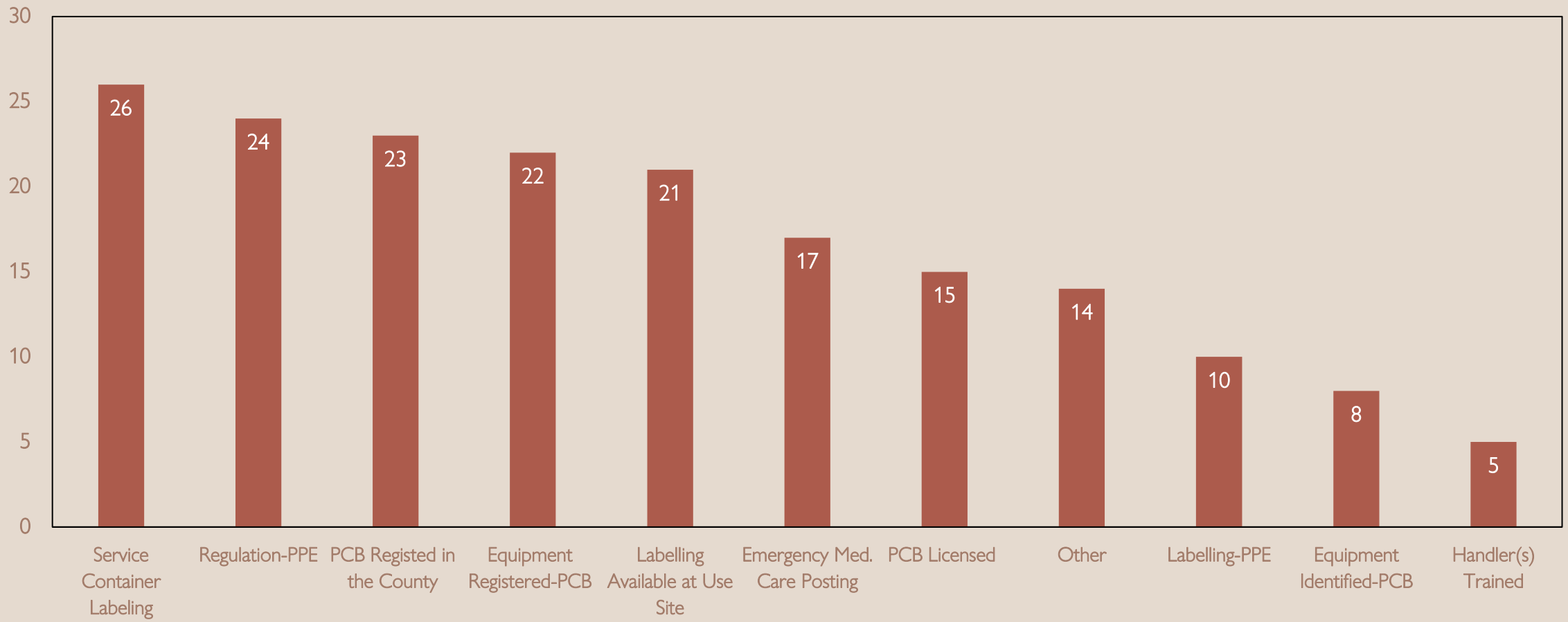
#2 Emergency Medical Care

#3 Service Container Labeling

#4 Registered Label



COMMON VIOLATIONS IN SAN MATEO COUNTY (LAST 6 YEARS)



Carbon Monoxide Pest Control Device

- Pesticide-free method to get rid of burrowing rodents.
- Carbon monoxide machine pumps carbon monoxide into their burrow system, leaving no harmful chemicals behind, which causes the burrowing rodent to faint before suffering asphyxiation.

Large Device

- Injects *carbon monoxide* into the rodent's burrow system using *multiple* tubes
- Each tube has a probe at the end that is used to find burrow runways and spread the treatment throughout the burrow





BURROW Rx

Medium Device

- Introduces a combination of carbon monoxide and smoke into the rodent's burrow system
- The smoke helps identify openings in the burrow system that should be plugged to increase success

Small Device

- Portable
- Introduces carbon monoxide into rodent burrow system
- Multiple treatments may be required to manage specific pests like gophers



NEW effective Oct. 2022

**Regulations that need to be
followed when operating these pest
management devices**

These can be found in Title 3, **California Code of
Regulations(CCR) 6695**, and are summarized here:

1. Must have an Environmental Protection Agency (EPA) number and warning label

2. Can only be used to manage burrowing rodents and should ***not*** be used on burrows that are occupied by non-target species.

Examples of non-target pests:

Burrowing owls

San Francisco garter snake

Tree squirrels



3. Cannot be used inside structures whether occupied or not.



4. Wear protective eye-wear while operating the device



5. Cannot be used within a ***certain distance*** of a structure inhabited by people or livestock, whether occupied or not, as follows:

- 50ft when managing ground squirrels or field mice
- 100ft when managing gophers
- 65ft when managing all other burrowing rodent pests (Ex. Voles, Norway Rats, Moles)



6. Report to DPR if use of these devices causes any adverse effect to human health or safety, property, or the environment.



7. *Retain records for 2 years* and make them available to DPR or the commissioner when requested.

Records must include:

- a. Date
- b. Property Operator's name
- c. Address
- d. Site type
- e. Length of application

COUNTY OF SAN MATEO



Avneet Kakkar

akakkar@smcgov.org

(650) 363-4700

smateoag@co.sanmateo.ca.us

<https://agwm.smcgov.org/>