

Storm drains flow directly into creeks, San Francisco Bay and the Pacific Ocean without any treatment. Non-stormwater and other wastes that flow into a storm drain cause pollution. Food handling facilities can cease stormwater pollution through proper cleanup practices that ensure food particles, oil and grease, litter, wash water and cleaning products flow to interior sewer connections, which ensures the water is treated prior to being released.

## NEVER RINSE OUTDOOR AREA WITH HOSE

Only rain water is allowed down the storm drains, because storm drains connect directly to local creeks.

It is the responsibility of your business to use appropriate Best Management Practices (BMPs) to keep wind or rain from carrying pollution into the street.



*Roofed trash enclosure with doors closed. Bilingual sign reminds staff to keep area tidy.*



*Dumpster lid is closed, and there is no loose trash on ground.*

## GENERAL BEST MANAGEMENT PRACTICES

### Keep Dumpster Area Clean

- ☐ Close dumpster lids.
- ☐ Routinely inspect dumpster area for cleanliness.
  - If dumpsters overfill, consider having more dumpsters, or increasing trash pick-up service.
  - Replace leaking or cracked dumpsters.
  - If loose waste is on the ground, then sweep up.
- ☐ Educate all staff on keeping dumpster areas tidy. With high rates of employee turnover, or when sharing a dumpster area, post signs or have routine meetings on proper BMPs.

### Cooking Oil & Grease

- ☐ Store oil and grease properly in permitted tallow bins; never pour oil or grease in the trash, storm drain, street, sinks or floor drains.
- ☐ Keep tallow bins clean & lids sealed.
- ☐ Have tallow bin collection scheduled to maintain adequate storage capacity.
- ☐ Check rooftop exhaust fans at least monthly. Place tray under exhaust fan shrouds to collect oil; empty weekly at a minimum.
- ☐ Clean up spills right away (See back of this sheet).

### Manage Outdoor Areas (Parking Lots, Outdoor Seating, Staff Break Areas, Outdoor Storage)

- ☐ Empty trash bins into dumpster regularly.
- ☐ Sweep frequently in trash-prone places.
- ☐ If frequent litter issues, consider adding trash cans.
- ☐ Place ash trays in cigarette-prone areas.



*Outdoor seating area is swept frequently, is covered, and has fencing to keep debris from blowing into the street.*

# BEST MANAGEMENT PRACTICES FOR FOOD SERVICE FACILITIES

Information for Restaurants | Cafeterias | Grocery Stores | Food Handling Facilities

*Properly cleaning and disposing of wash waters helps prevent pollution.*

## CLEANING BEST MANAGEMENT PRACTICES

### Use Dry Cleaning Methods

- ❑ Sweep up dust, debris, and trash.
- ❑ Vacuum floor mats. If water is needed, rinse mats in dishwasher or mop utility sink. Never wash floor mats outdoors or allow wash water to flow to outdoor areas.
- ❑ Do not clean equipment outdoors.
- ❑ When hiring cleaning companies (e.g. for cleaning hood/roof equipment), make sure the company uses dry cleaning methods. If wet methods are used, block off gutters & use a pump/wet-vac, so no water spills off roof.

*Sweeping is an example of a dry cleaning method.*



### Contain and Manage Spills Promptly

- ❑ Keep a spill kit near high risk areas (e.g. near oil tallow bins, loading dock). Kit may include: Barrier/Sock, Storm Drain Inlet Protection; Absorbent granules or kitty litter, Towels, Pads; Dustpan, Broom, Gloves, Trash Bags.
- ❑ Contain the spill and protect nearby storm drains immediately.
- ❑ Use absorbents/towels to manage spill. Sweep up and dispose of properly.
- ❑ Make sure staff know spill plan and spill kit location.



*Never rinse water down storm drains.*

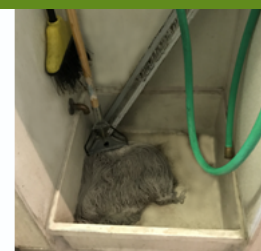
## STORM DRAINS VS. SANITARY SEWERS:

*Do your employees know the difference?*

All **outdoor drains** are storm drains. Pollution that enters storm drains flows directly to creeks and San Francisco Bay or the Ocean, not treated or properly cleaned.

**Indoor drains** (such as sink, toilet, mop sink, kitchen floor drain) lead to the sanitary sewer system, which is connected to a wastewater treatment plant.

*Mop sinks go to the sanitary sewer and wastewater treatment plant.*



## LOCAL STORMWATER AGENCIES:

Atherton . . . . . (650) 752-0555  
 Belmont. . . . . (650) 637-2972  
 Brisbane . . . . . (415) 508-2130  
 Burlingame. . . . (650) 342-3727  
 Colma . . . . . (650) 757-8888  
 Daly City . . . . . (650) 991-8208  
 East Palo Alto. . (650) 372-3189

Foster City. . . . . (650) 286-3270  
 Half Moon Bay . . . . . (650) 726-7177  
 Hillsborough . . . . . (650) 375-7444  
 Menlo Park . . . . . (650) 330-6750  
 Millbrae . . . . . (650) 259-2392  
 Pacifica . . . . . (650) 738-3767  
 Portola Valley . . . . . (650) 851-1700

Redwood City . . . . . (650) 780-7464  
 San Bruno . . . . . (650) 616-7020  
 San Carlos . . . . . (650) 802-4212  
 San Mateo . . . . . (650) 522-7300  
 San Mateo County . . . . (888) 442-2666  
 South San Francisco . . (650) 877-8555  
 Woodside. . . . . (650) 851-6790