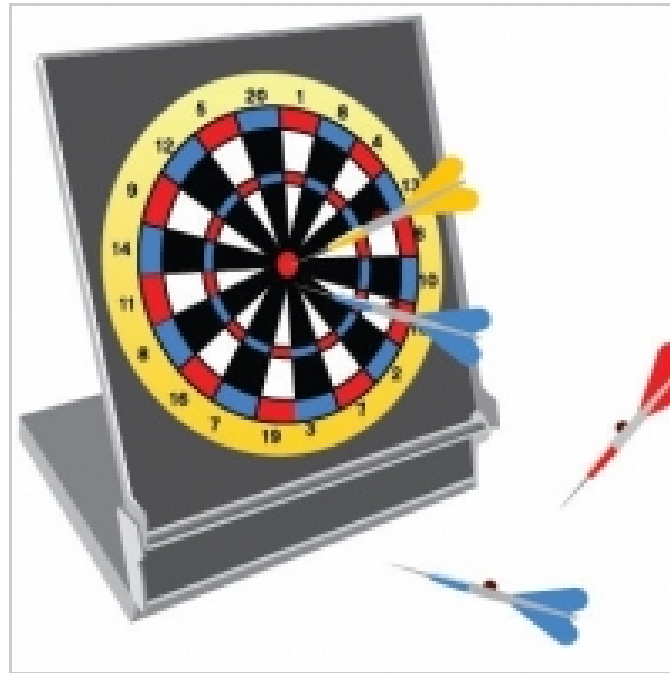


Urban Pesticide Pollution Prevention (UP3) Project

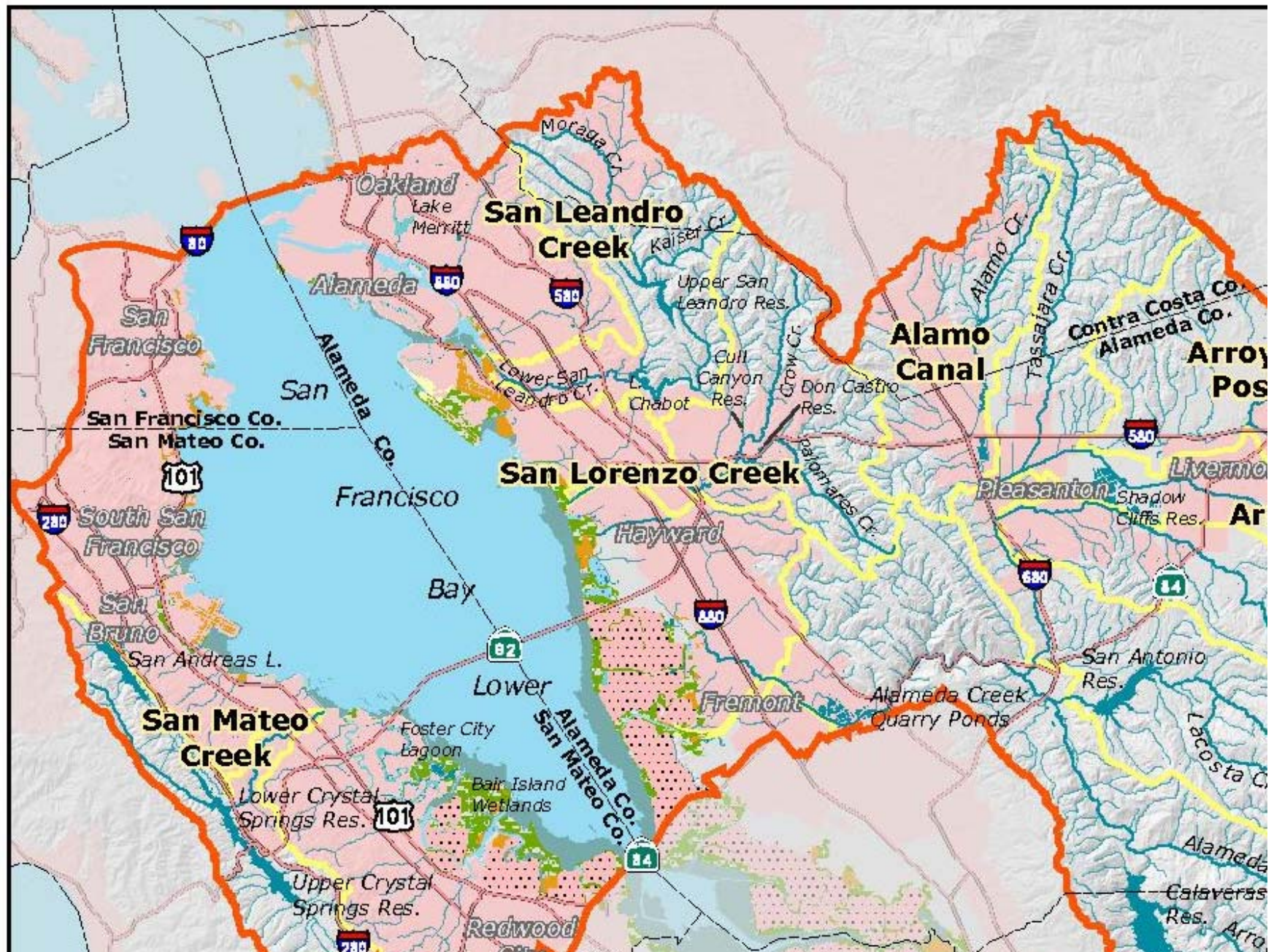
- In CA, the majority of pesticides are applied in urban areas (NOT agriculture)



How we think of pesticides:
target certain pests



How pesticides really work:
they move off-target



Toxic at “ridiculously tiny” concentrations

- Pyrethroids remain toxic at nanograms per Liter (ng/L)
- = one square foot in an area the size of Illinois



Non-target organisms affected

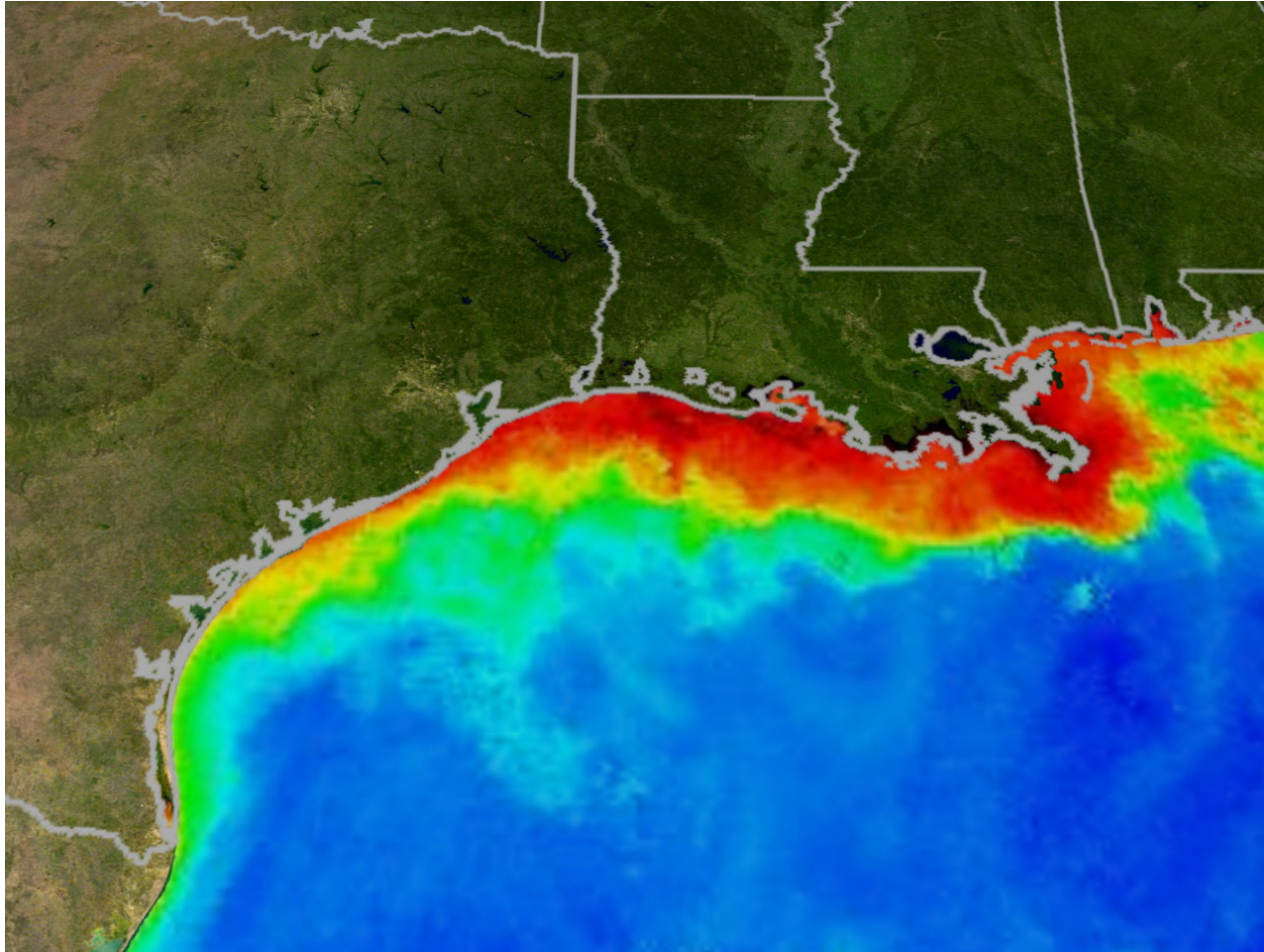


Ceriodaphnia dubia



Hyalella azteca

Like the dead zone in Gulf of Mexico?



Structural pest control: Buildings



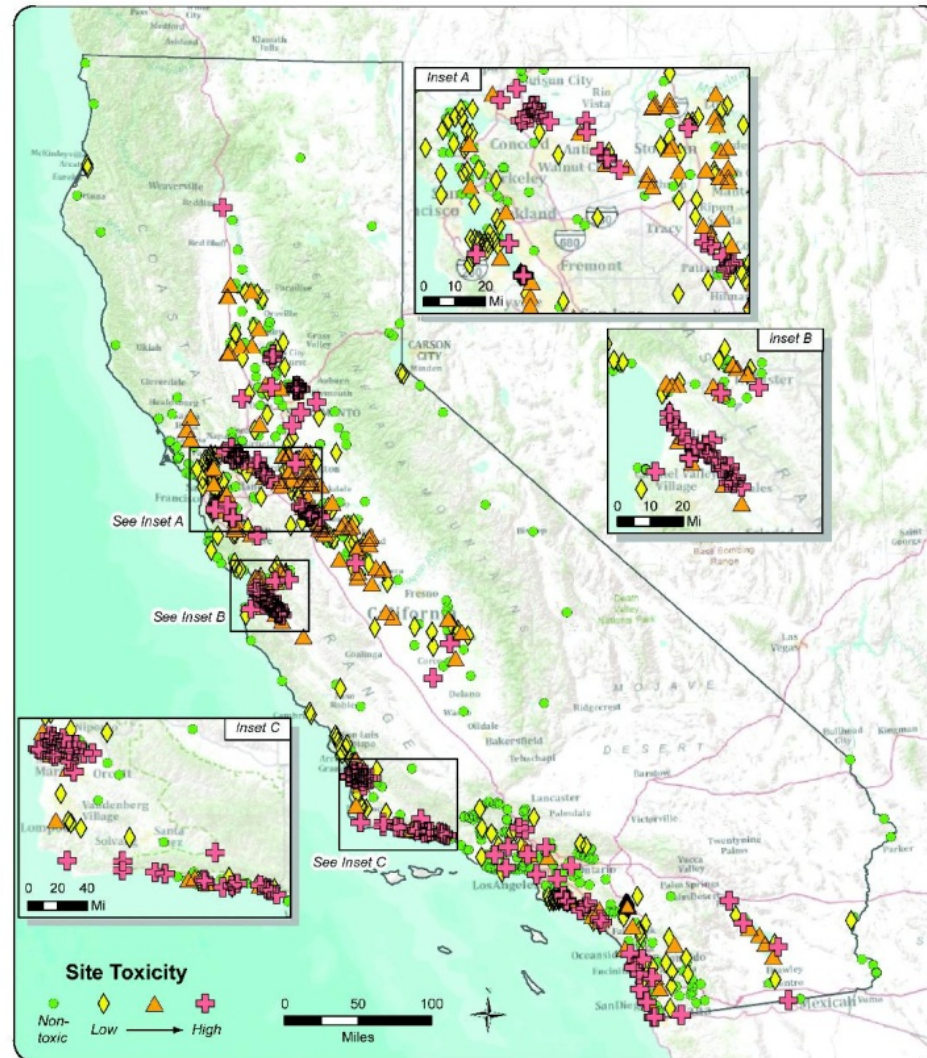
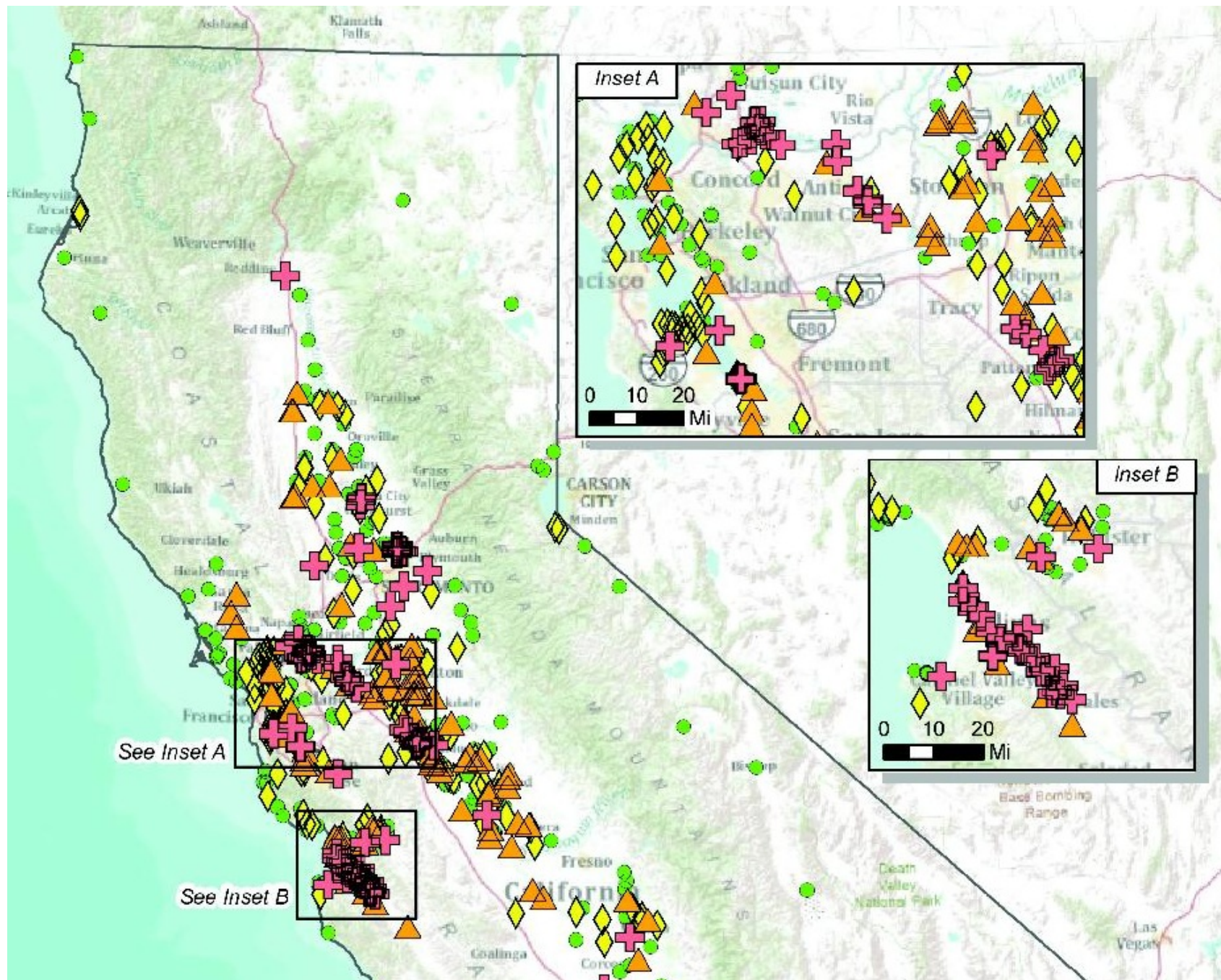


Figure 1. Magnitude of toxicity at all California sites assessed, based on the most sensitive species (test endpoint) in either water or sediment samples at each site.



That's the problem

- Next up: Solutions
- Structural IPM in municipalities
- Your role in achieving clean water